



July 2016

USHSLA INFO EXCHANGE

Export Numbers for U.S. Bovine Fresh/Wet Salted Hides

	Number of Pieces*			Value Thousand \$		
	Jan - May 2015	Jan - May 2016	% Chg	Jan - May 2015	Jan - May 2016	% Chng
World	7,774,724	8,441,293	9%	679,447	539,604	-21%
China/HK	4,999,160	4,878,520	-2%	453,660	325,008	-28%
Korea	1,235,912	1,311,926	6%	115,527	90,312	-22%
Mexico	500,031	975,992	95%	31,814	52,776	66%
EU-28	304,134	461,529	52%	18,477	21,185	15%
Thailand	123,522	310,997	152%	11,159	20,911	87%
Taiwan	334,018	213,899	-36%	30,730	14,835	-52%
Vietnam	67,579	67,721	0%	5,270	4,263	-19%
Japan	52,768	49,971	-5%	5,915	4,227	-29%
India	24,650	48,850	98%	693	1,612	133%
Canada	40,019	25,359	-37%	2,164	1,322	-39%
Turkey	26,607	31,840	20%	625	1,260	102%
Bosnia	0	9,885	-	0	670	-
Costa Rica	2,755	27,121	884%	180	472	162%
Israel	18,322	17,651	-4%	330	309	-6%
Brazil	1,730	2,060	19%	114	189	66%
Dom. Rep.	2,305	970	-58%	260	92	-65%
Russia	0	2,276	-	0	58	-
Haiti	0	4,000	-	0	46	-
Chile	0	565	-	0	45	-

Export Numbers for U.S. Wet Blue Hides

	Number of Pieces*			Value Thousand \$		
	Jan - May 2015	Jan - May 2016	% Chg	Jan - May 2015	Jan - May 2016	% Chng
World Total	3,385,621	2,865,520	-15%	367,853	263,590	-28%
China/HK	1,216,233	1,003,244	-18%	129,260	87,930	-32%
EU-28	739,552	743,711	1%	82,160	71,973	-12%
Vietnam	431,530	464,837	8%	48,747	43,526	-11%
Korea	126,746	191,658	51%	13,683	15,461	13%
Mexico	267,452	124,108	-54%	24,669	12,423	-50%
Thailand	165,696	94,472	-43%	19,521	10,248	-48%
Taiwan	260,325	82,791	-68%	28,817	7,503	-74%
Dom. Rep.	114,560	65,364	-43%	13,942	6,256	-55%
Japan	34,305	54,039	58%	3,975	4,950	25%
India	29,222	24,896	-15%	3,080	1,917	-38%
Brazil	0	9,600	-	0	793	-
Argentina	0	5,900	-	0	522	-

Export Numbers for U.S. Pig Skins

Number of Pieces/Thousand \$U.S.

	Number of Pieces			Value Thousand \$		
	Jan - May 2015	Jan - May 2016	% Chg	Jan - May 2015	Jan - May 2016	% Chng
World Total	2,773,391	2,057,635	-26%	19,086	15,776	-17%
Mexico	1,001,700	951,220	-5%	8,924	9,095	2%
Taiwan	1,500,235	865,315	-42%	7,702	4,699	-39%
Thailand	174,779	169,672	-3%	1,494	990	-34%
EU-28	46,300	35,000	-24%	379	518	37%
China/HK	25,838	24,335	-6%	304	304	0%
Vietnam	5,132	6,910	35%	81	88	9%
Korea	17,544	2,678	-85%	176	42	-76%
Japan	1,863	2,505	34%	29	39	34%

PLEASE NOTE: In the past, the Number of Pieces column was **inaccurate**, typically over-inflating the actual amounts exported. In 2015, the US Government made changes to its reporting system, which we are hopeful will fix this problem. [CLICK HERE](#) for more information.

Cattle on Feed Summary

National Agricultural Statistics Service, USDA

([Available Here](#))

Released June 24, 2016

United States Cattle on Feed Up 2 Percent

Cattle and calves on feed for the slaughter market in the United States for feedlots with capacity of 1,000 or more head totaled 10.8 million head on June 1, 2016. The inventory was 2 percent above June 1, 2015.

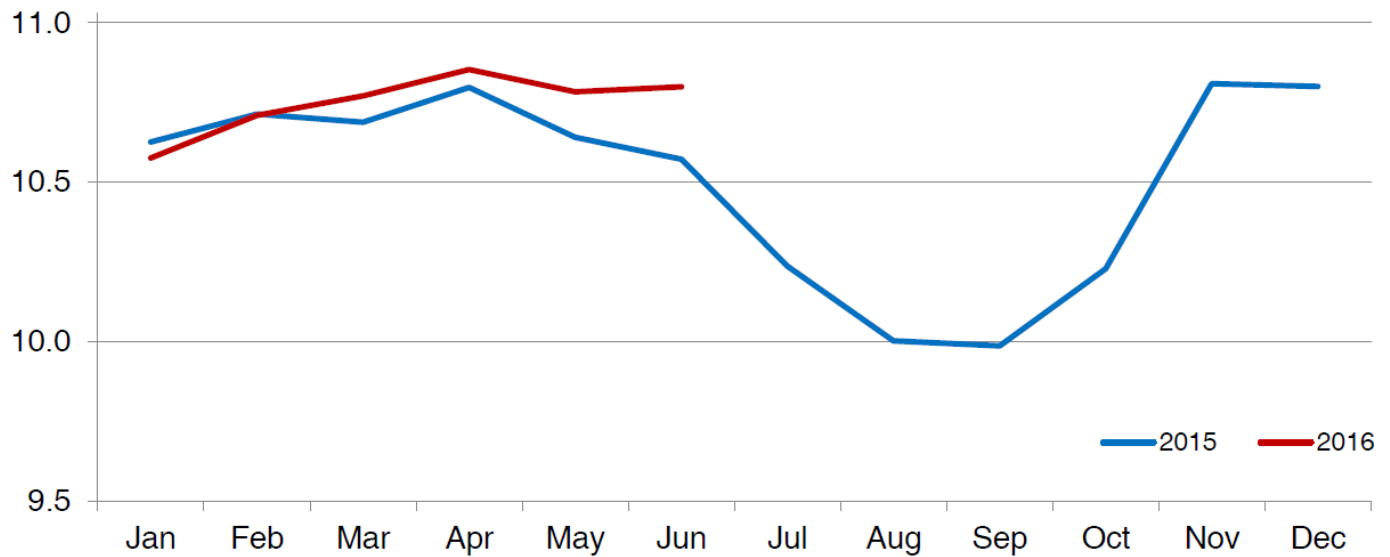
Placements in feedlots during May totaled 1.88 million head, 10 percent above 2015. Net placements were 1.81 million head. During May, placements of cattle and calves weighing less than 600 pounds were 305,000 head, 600-699 pounds were 250,000 head, 700-799 pounds were 479,000 head, and 800 pounds and greater were 850,000 head.

Marketings of fed cattle during May totaled 1.79 million head, 5 percent above 2015.

Other disappearance totaled 74,000 head during May, 4 percent below 2015.

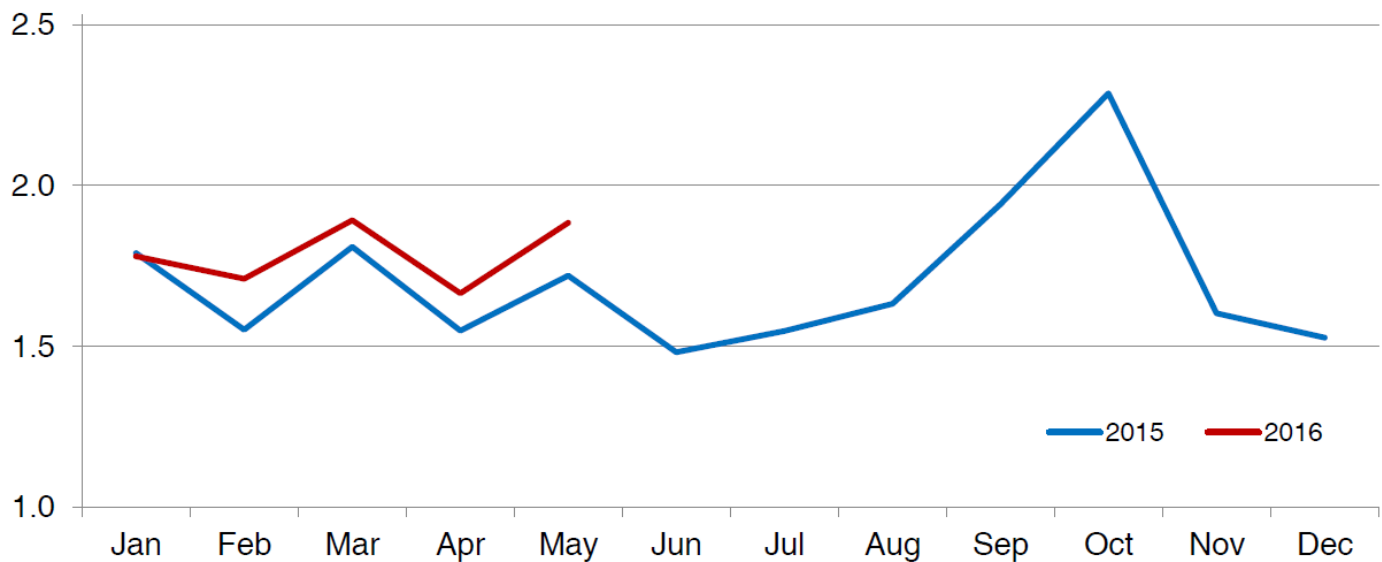
Cattle on Feed Inventory on 1,000+ Capacity Feedlots – United States

Million head



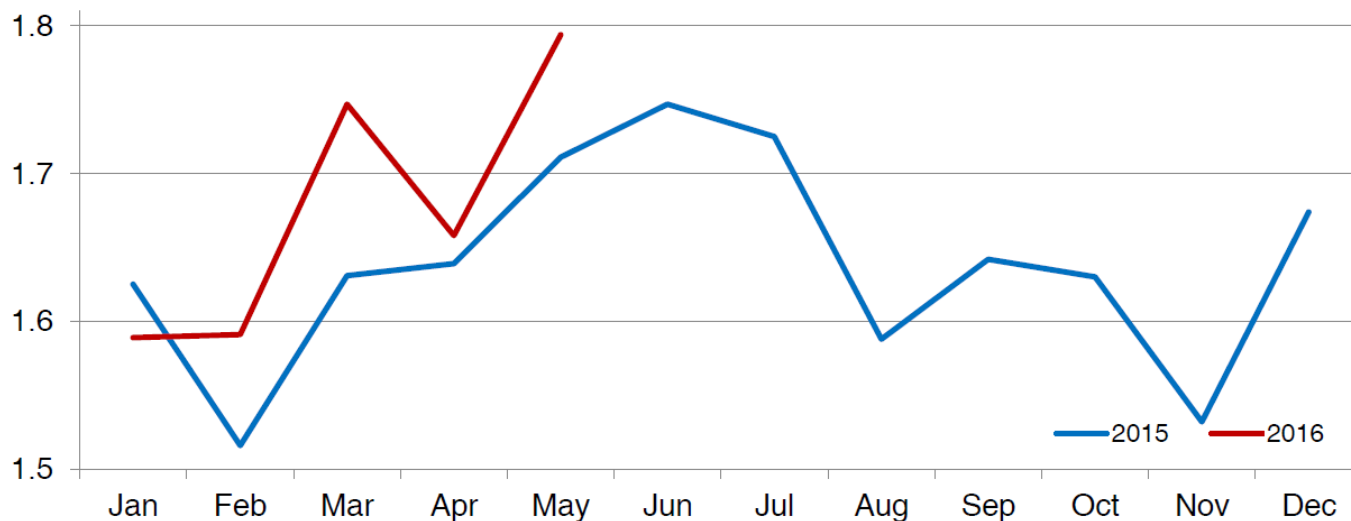
Number of Cattle Placed on 1,000+ Capacity Feedlots – United States

Million head



Number of Cattle Marketed on 1,000+ Capacity Feedlots – United States

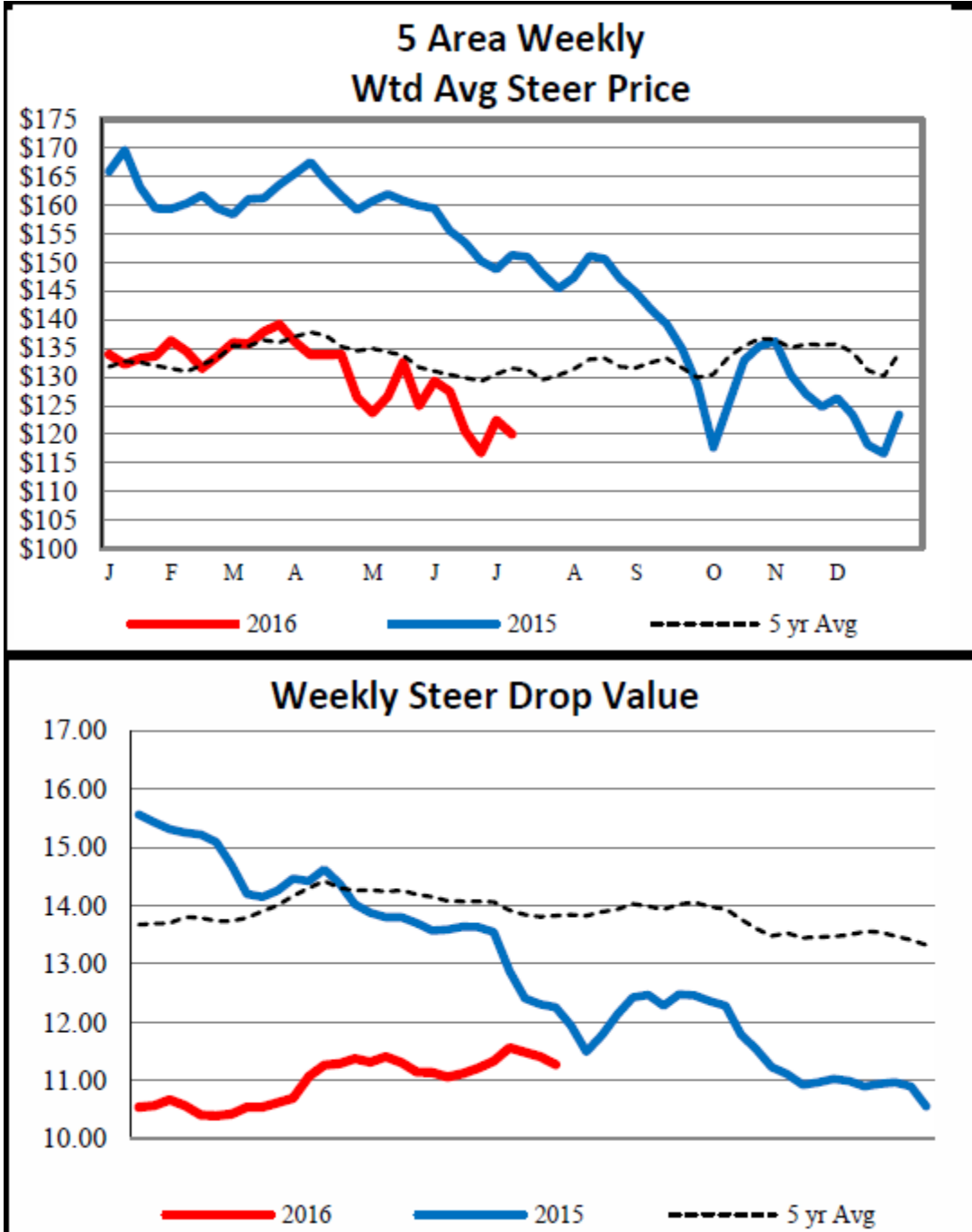
Million head



Weekly Estimated Slaughter Statistics
Weekly Livestock, Meat and Grain Highlights
[\(Available Here\)](#)
As of July 11, 2016

	This Week	Change from Last Week	Change from Year Ago
Hogs			
Weekly Est. Hog Slaughter	1,826,000	-13.7%	-12.0%
YTD. Est. Hog Slaughter	59,199,000		-0.1%
Cattle			
Weekly Est. Cattle Slaughter	513,000	-14.5%	-7.7%
YTD Est. Cattle Slaughter	15,245,000		2.9%

Weekly Average Weighted Steer Price and Drop Credit Value Percentage
(Charts [Available Here](#))
As of July 11, 2016



For the Week Ending June 30, 2016
(Available Here)

Hides and Skins: Net sales of 213,300 pieces, all whole cattle hides, reported for delivery in 2016 were down 54 percent from the previous week and 52 percent from the prior-4 week average. The primary destinations were China (103,000 pieces), South Korea (54,900 pieces), Mexico (23,800 pieces), Vietnam (10,400 pieces), and Italy (8,000 pieces), were partially offset by reductions for Brazil (100 pieces). Exports of 365,900 pieces, all whole cattle hides, were up 4 percent from the previous week, but down 3 percent from the prior 4-week average. The primary destinations were China (241,700 pieces), South Korea (60,500 pieces), Mexico (28,300 pieces), Taiwan (13,800 pieces), and Thailand (9,700 pieces).

Net sales of 116,200 wet blues for 2016 were down 16 percent from the previous week, but unchanged from the prior 4-week average. Increases were reported for Vietnam (35,900 unsplit), Mexico (24,600 unsplit), China (21,700 unsplit and 500 grain splits), and Italy (16,200 unsplit). Reductions were reported for Japan (200 unsplit and 100 grain splits) and Vietnam (100 grain splits). Exports of 141,200 wet blues were up 11 percent from the previous week, but unchanged from the prior 4-week average. Exports were primarily to China (28,300 unsplit and 13,900 grain splits), Vietnam (17,600 unsplit and 5,900 grain splits), and Italy (18,200 unsplit and 3,800 grain splits). Net sales of splits totaling 75,100 pounds for 2016 reported for Hong Kong (52,400 pounds), Italy (34,600 pounds), China (17,500 pounds), Vietnam (3,100 pounds), and Taiwan (800 pounds), were partially offset by reductions for South Korea (33,300 pounds). Exports of 834,200 pounds were reported to South Korea (704,600 pounds) and China (129,700 pounds).

WEEKLY NET SALES ACTIVITY	WHOLE				WET BLUES		
	CATTLE HIDES 1601	CALF SKINS 1602	KIP SKINS 1603	CROUPONS 1604	UNSPLIT 1606	GRAIN SPLIT 1607	DROP SPLITS 1608
COUNTRY	THOUSAND UNITS						
ITALY	8.0				16.2		34.6
JAPAN	4.3				-0.2	-0.1	
TAIWAN	7.1				0.8		0.8
CHINA	103.0				21.7	0.5	17.5
HG KONG							52.4
KOR REP	54.9						-33.3
THAILND	1.9				5.8		
VIETNAM	10.4				35.9	-0.1	3.1
ARGENT							
BRAZIL	-0.1						
DOM REP					11.2		
MEXICO	23.8				24.6	-0.1	
NET SALES	213.3	0.0	0.0	0.0	116.1	0.1	75.1
WEEKLY EXPORTS	365.9	0.0	0.0	0.0	104.1	37.0	834.2
ACCUM. EXPORTS	9,391.1	6.5	97.6	0.0	2,498.7	1,209.8	27,450.6
OUTSTANDING SALES	3,198.8	0.0	41.5	0.0	560.8	360.1	11,261.7