



September 2015

# USHSLA INFO EXCHANGE

## U.S. Statistics

### Export Numbers for U.S. Bovine Fresh/Wet Salted Hides Number of Pieces/Thousand \$U.S.\*

	Number of Pieces*			Value Thousand \$		
	Jan - July 2014	Jan - July 2015	% Chg	Jan - July 2014	Jan - July 2015	% Chng
<b>World</b>	14,760,306	10,860,129	-26%	1,094,546	923,339	-16%
<b>China/HK</b>	9,043,558	6,796,195	-25%	706,403	598,022	-15%
<b>Korea</b>	2,088,493	1,881,898	-10%	168,000	170,379	1%
<b>Mexico</b>	810,520	748,009	-8%	53,475	46,329	-13%
<b>Taiwan</b>	1,051,701	447,734	-57%	76,603	40,720	-47%
<b>EU-28</b>	933,972	408,028	-56%	41,261	25,458	-38%
<b>Thailand</b>	166,853	190,079	14%	14,153	16,587	17%
<b>Japan</b>	344,541	84,256	-76%	18,064	9,142	-49%
<b>Vietnam</b>	99,361	81,394	-18%	6,793	6,436	-5%
<b>Indonesia</b>	14,239	32,086	125%	1,357	2,397	77%
<b>Canada</b>	14,412	42,346	194%	797	2,282	186%
<b>Turkey</b>	94,556	47,597	-50%	4,795	1,459	-70%
<b>Cambodia</b>	0	7,732	-	0	793	-
<b>Pakistan</b>	12,003	22,488	87%	564	747	32%
<b>India</b>	14,369	27,103	89%	326	745	129%
<b>Israel</b>	36,649	23,666	-35%	718	583	-19%
<b>Bosnia</b>	0	5,600	-	0	476	-
<b>Costa Rica</b>	34	7,929	23221%	3	324	10700%
<b>Dom. Rep.</b>	8,989	2,305	-74%	443	260	-41%
<b>Brazil</b>	900	1,730	92%	36	114	217%
<b>Norway</b>	0	307	-	0	21	-
<b>Australia</b>	170	164	-4%	10	15	50%
<b>Haiti</b>	0	776	-	0	14	-
<b>Philippines</b>	7,000	179	-97%	59	12	-80%
<b>Colombia</b>	14,983	170	-99%	450	12	-97%
<b>Guatemala</b>	0	314	-	0	9	-
<b>Panama</b>	0	44	-	0	4	-

**PLEASE NOTE:** In the past, the Number of Pieces column was inaccurate, typically over-inflating the actual amounts exported. In 2015, the US Government made changes to its reporting system, which we are hopeful will fix this problem. [CLICK HERE](#) for more information.

**Export Numbers for U.S. Pig Skins**  
 Number of Pieces/Thousand \$U.S.

	Number of Pieces			Value Thousand \$		
	Jan - July 2014	Jan - July 2015	% Chg	Jan - July 2014	Jan - July 2015	% Chng
<b>World Total</b>	4,012,977	3,606,011	-10%	34,091	24,367	-29%
<b>Mexico</b>	1,535,338	1,379,278	-10%	16,596	11,902	-28%
<b>Taiwan</b>	1,763,096	1,942,238	10%	10,390	9,811	-6%
<b>Thailand</b>	305,160	174,779	-43%	3,092	1,494	-52%
<b>EU-28</b>	99,853	55,050	-45%	879	504	-43%
<b>China/HK</b>	55,328	25,838	-53%	553	304	-45%
<b>Korea</b>	175,260	17,544	-90%	1,753	176	-90%
<b>Vietnam</b>	71,699	9,421	-87%	701	148	-79%
<b>Japan</b>	5,204	1,863	-64%	105	29	-72%

**Export Numbers for U.S. Wet Blue Hides**  
 Number of Pieces/Thousand \$U.S.\*\*

	Number of Pieces*			Value Thousand \$		
	Jan - July 2014	Jan - July 2015	% Chg	Jan - July 2014	Jan - July 2015	% Chng
<b>World Total</b>	6,066,641	4,471,679	-26%	533,161	476,690	-11%
<b>China/HK</b>	2,250,563	1,652,976	-27%	198,922	171,909	-14%
<b>EU-28</b>	1,360,554	998,998	-27%	126,326	108,388	-14%
<b>Vietnam</b>	822,609	549,425	-33%	69,852	60,616	-13%
<b>Taiwan</b>	337,424	306,766	-9%	29,491	33,687	14%
<b>Mexico</b>	413,835	336,445	-19%	26,626	31,591	19%
<b>Thailand</b>	322,552	199,350	-38%	28,663	23,076	-19%
<b>Korea</b>	179,325	208,658	16%	17,022	22,045	30%
<b>Dom. Rep.</b>	199,475	145,207	-27%	19,440	17,410	-10%
<b>Japan</b>	50,717	37,192	-27%	4,488	4,298	-4%
<b>India</b>	55,548	36,637	-34%	5,333	3,667	-31%
<b>Australia</b>	0	25	-	0	3	-

**PLEASE NOTE:** In the past, the Number of Pieces column was inaccurate, typically over-inflating the actual amounts exported. In 2015, the US Government made changes to its reporting system, which we are hopeful will fix this problem. [CLICK HERE](#) for more information.

## Cattle on Feed Summary

**National Agricultural Statistics Service, USDA**

**(Available Here)**

**Released August 21, 2015**

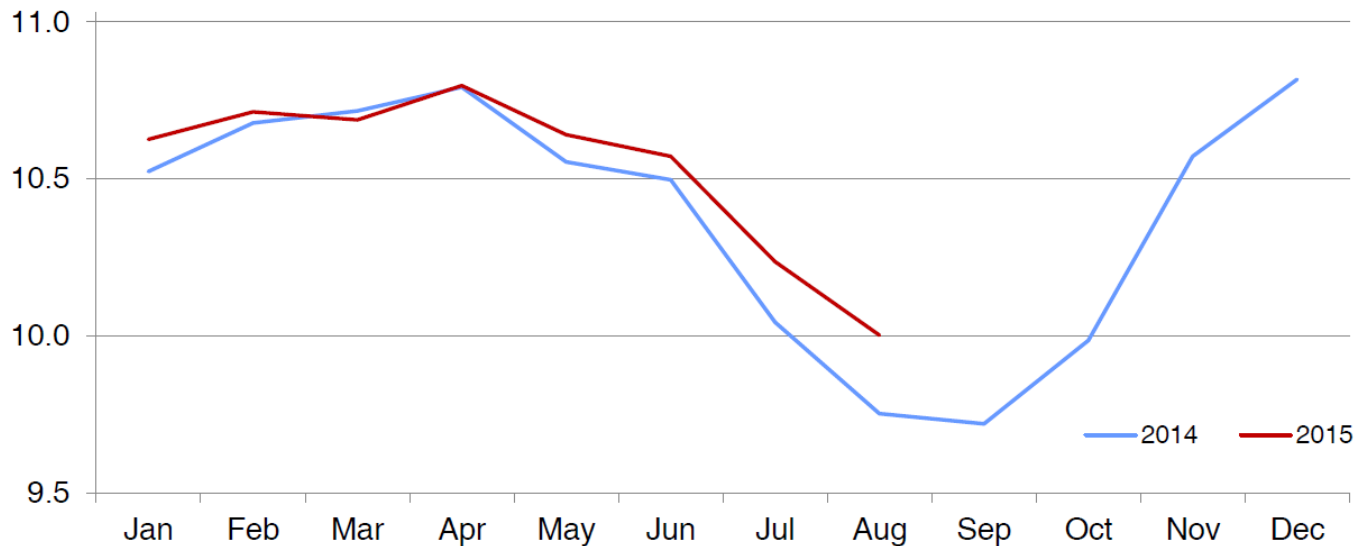
### United States Cattle on Feed Up 3 Percent

Cattle and calves on feed for the slaughter market in the United States for feedlots with capacity of 1,000 or more head totaled 10.0 million head on August 1, 2015. The inventory was 3 percent above August 1, 2014. Placements in feedlots during July totaled 1.55 million head, 1 percent below 2014. Net placements were 1.49 million head. During July, placements of cattle and calves weighing less than 600 pounds were 365,000 head, 600-699 pounds were 235,000 head, 700-799 pounds were 327,000 head, and 800 pounds and greater were 620,000 head. Placements are the lowest for July since the series began in 1996. Marketings of fed cattle during July totaled 1.73 million head, 3 percent below 2014. Marketings are the lowest for July since the series began in 1996.

Other disappearance totaled 56,000 head during July, 11 percent below 2014.

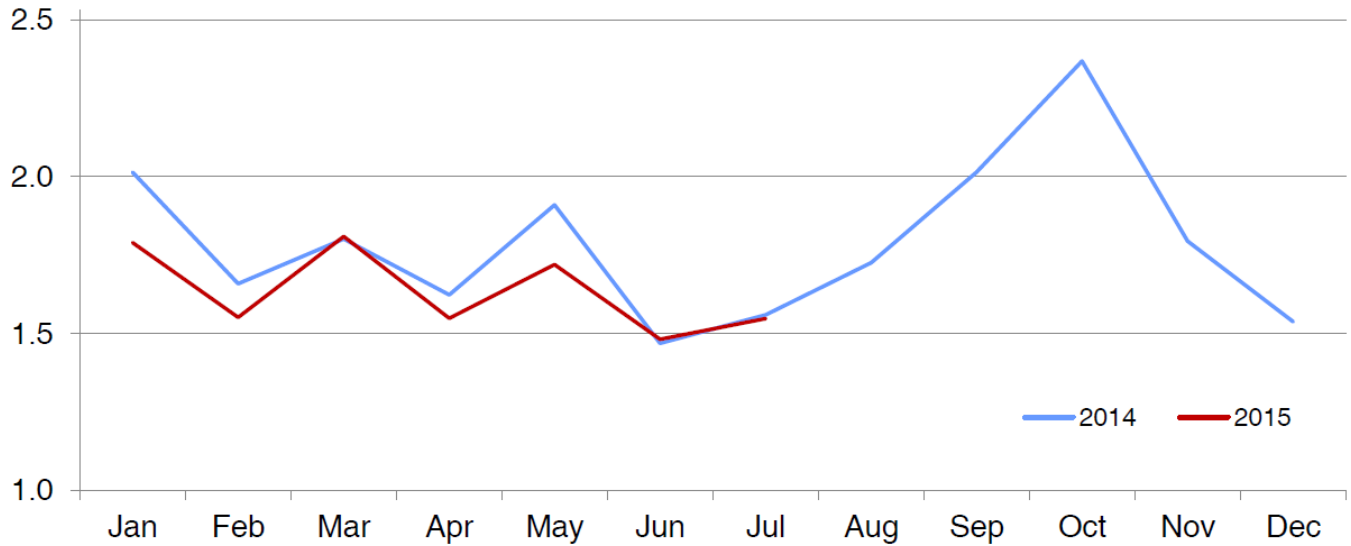
### Cattle on Feed Inventory on 1,000+ Capacity Feedlots – United States

Million head



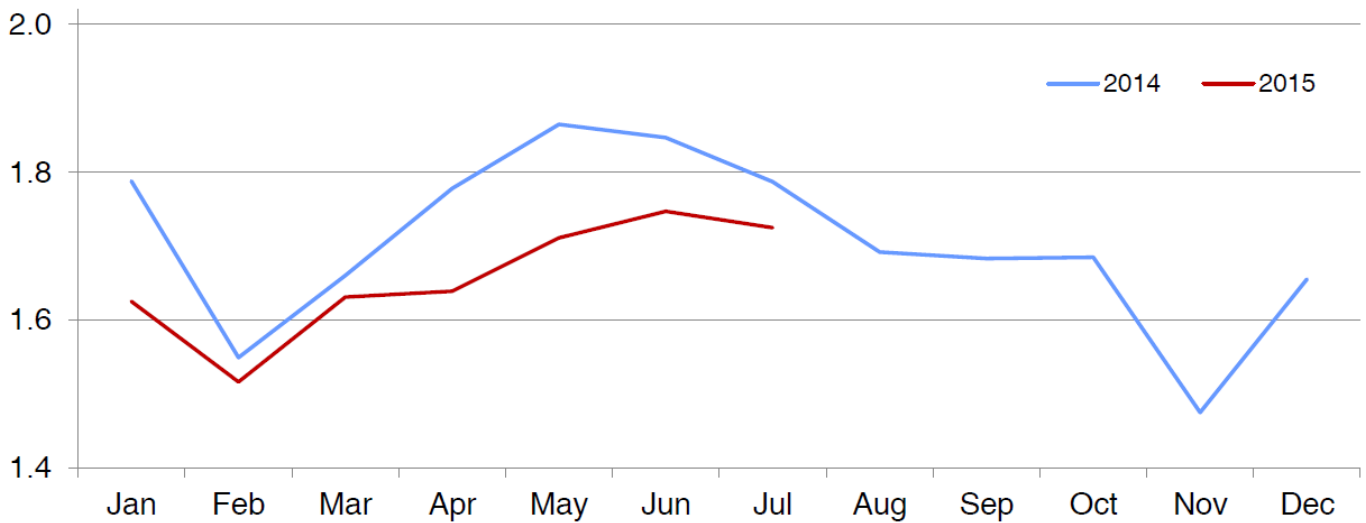
### Number of Cattle Placed on 1,000+ Capacity Feedlots – United States

Million head



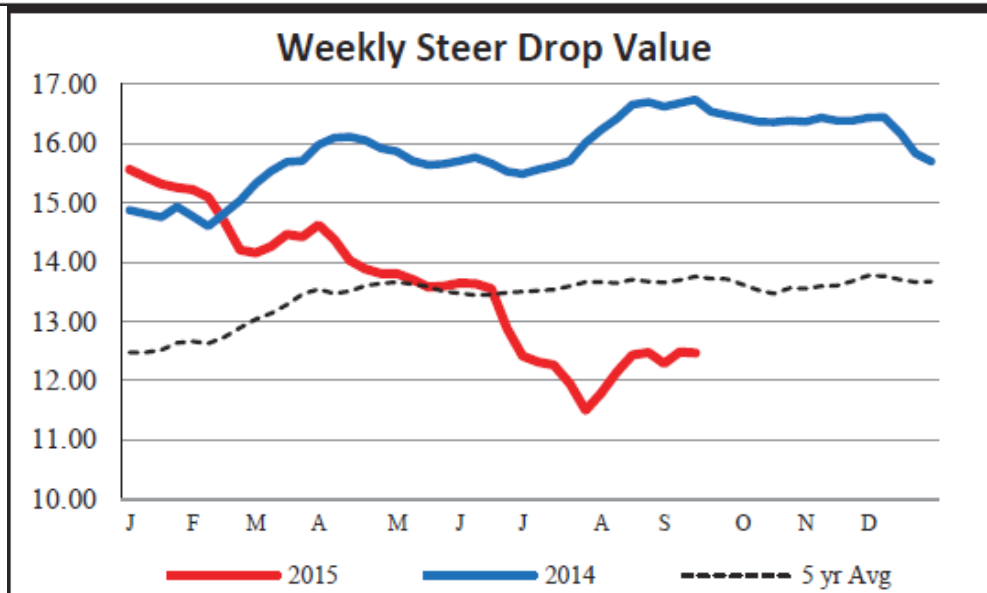
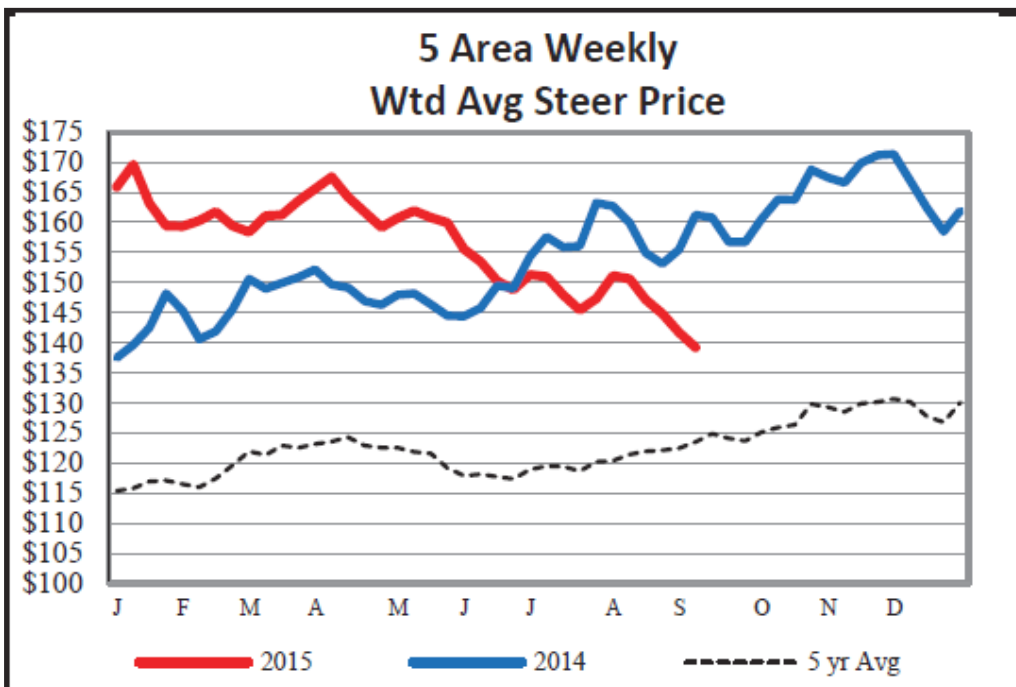
### Number of Cattle Marketed on 1,000+ Capacity Feedlots – United States

Million head



## 2015 Actual Slaughter Under Federal Inspection ([Available Here](#))

	<b>Total Cattle (Thou. Hd)</b>	<b>Beef Production (Mil Lbs)</b>	<b>Av. Live Weight (Lbs)</b>	<b>Av. Dressed Weight (Lbs)</b>
Jan 1 – Sept 11, 2015	19,904	16,270	1,350	819
% changed from 2014	-6.6%	-4.3%	2.1%	2.2%



**Weekly Estimated Slaughter Statistics**  
**Weekly Livestock, Meat and Grain Highlights**  
[\(Available Here\)](#)  
**As of August 10, 2015**

	<b>This Week</b>	<b>Change from Last Week</b>	<b>Change from Year Ago</b>
<b>Hogs</b>			
Weekly Est. Hog Slaughter	2,126,000	-0.3%	10.3%
YTD. Est. Hog Slaughter	67,710,000		7.6%
<b>Cattle</b>			
Weekly Est. Cattle Slaughter	535,000	0.6%	-6.6%
YTD Est. Cattle Slaughter	16,965,000		-6.9%

## USDA Weekly Export Sales Statistics For the Week Ending September 3, 2015 ([Available Here](#))

Hides and Skins: Net sales of 370,000 pieces for 2015 were up 40 percent from the previous week and 17 percent from the prior 4-week average. Whole cattle hide sales of 367,300 pieces were primarily for China (216,300 pieces), South Korea (98,600 pieces), Mexico (18,600 pieces), Japan (10,900 pieces), and Vietnam (9,000 pieces, including 3,800 pieces switched from Taiwan and decreases of 1,100 pieces). Exports of 318,600 pieces, all whole cattle hides were down 42 percent from the previous week and 35 percent from the prior 4-week average. The primary destinations were China (215,400 pieces), South Korea (66,700 pieces), Mexico (11,700 pieces), Italy (8,300 pieces), and Thailand (6,300 pieces).

Net sales of 57,000 wet blues for 2015 were down 71 percent from the previous week and 64 percent from the prior 4-week average. Increases were reported for China (31,700 unsplit), Vietnam (14,600 unsplit), India (4,800 grain splits and 1,300 unsplit), and Thailand (4,800 unsplit). Decreases were reported for China (2,800 grain splits), Japan (500 grain splits), and South Korea (300 grain splits). Exports of 111,800 wet blues were down 29 percent from the previous week and from the prior 4-week average. The primary destinations were China (36,600 unsplit and 22,100 grain splits), Italy (9,200 unsplit and 7,200 grain splits), Mexico (10,700 grain splits and 1,800 unsplit), and Vietnam (12,000 unsplit). Net sales of splits totaling 524,300 pounds for 2015 were reported for China (455,600 pounds), Hong Kong (50,000 pounds), Taiwan (16,100 pounds), and South Korea (2,600 pounds). For 2016, net sales of 7,000 pounds resulted as increases for China (13,500 pounds), were partially offset by decreases for Italy (6,500 pounds). Exports of 574,400 pounds were down 24 percent from the previous week and 20 percent from the prior 4-week average. The destinations were South Korea (383,400 pounds), Hong Kong (100,000 pounds), and Taiwan (91,100 pounds).

WEEKLY NET SALES ACTIVITY COUNTRY	WHOLE				WET BLUES		
	CATTLE HIDES 1601	CALF SKINS 1602	KIP SKINS 1603	CROUPONS 1604	UNSPLIT 1606	GRAIN SPLIT 1607	DROP SPLITS 1608
	THOUSAND UNITS						
ITALY	6.9				1.7	-0.1	
JAPAN	10.9		1.4			-0.5	
TAIWAN	2.9						16.1
CHINA	216.3		1.4		31.7	-2.8	455.6
INDIA	-0.1				1.3	4.8	
HG KONG							50.0
KOR REP	98.6					-0.3	2.6
THAILND	4.1				4.8		
VIETNAM	9.0				14.6		
DOM REP							
MEXICO	18.6					1.9	
NET SALES	367.3	0.0	2.7	0.0	54.0	3.0	524.3
WEEKLY EXPORTS	318.6	0.0	0.0	0.0	68.8	43.0	574.4
ACCUM. EXPORTS	13,450.9	12.3	138.5	0.0	3,417.7	1,326.5	25,843.8
OUTSTANDING SALES	3,463.5	8.6	31.8	0.0	441.7	572.5	6,234.1