



March 2016

# USHSLA INFO EXCHANGE

## Export Numbers for U.S. Bovine Fresh/Wet Salted Hides Number of Pieces/Thousand \$U.S.

	Number of Pieces*			Value Thousand \$		
	Jan 2015	Jan 2016	% Chg	Jan 2015	Jan 2016	% Chng
<b>World</b>	1,271,895	1,560,983	23%	110,713	98,388	-11%
<b>China/HK</b>	831,196	950,443	14%	74,273	63,294	-15%
<b>Korea</b>	209,674	209,903	0%	19,700	14,385	-27%
<b>Mexico</b>	108,997	187,610	72%	6,518	9,750	50%
<b>EU-28</b>	41,854	98,448	135%	3,817	4,262	12%
<b>Thailand</b>	12,913	56,679	339%	1,254	3,483	178%
<b>Taiwan</b>	33,859	17,236	-49%	2,752	1,231	-55%
<b>Japan</b>	6,022	9,589	59%	711	826	16%
<b>Turkey</b>	1,963	8,690	343%	33	350	961%
<b>India</b>	1,800	8,295	361%	46	276	500%
<b>Vietnam</b>	6,052	3,899	-36%	445	247	-44%
<b>Canada</b>	7,150	3,538	-51%	385	161	-58%
<b>Israel</b>	2,368	4,192	77%	50	77	54%
<b>Costa Rica</b>	0	2,461	-	0	43	-

## Export Numbers for U.S. Wet Blue Hides Number of Pieces/Thousand \$U.S.

	Number of Pieces*			Value Thousand \$		
	Jan 2015	Jan 2016	% Chg	Jan 2015	Jan 2016	% Chng
<b>World Total</b>	518,285	553,192	7%	57,192	50,168	-12%
<b>China/HK</b>	205,070	221,870	8%	22,130	20,057	-9%
<b>EU-28</b>	103,320	117,267	13%	12,288	11,147	-9%
<b>Vietnam</b>	40,742	86,513	112%	4,884	7,875	61%
<b>Korea</b>	14,167	44,876	217%	1,395	3,667	163%
<b>Mexico</b>	44,973	36,333	-19%	2,971	3,418	15%
<b>Taiwan</b>	36,592	16,053	-56%	4,414	1,105	-75%
<b>Japan</b>	13,701	10,637	-22%	1,569	961	-39%
<b>Thailand</b>	34,809	7,844	-77%	4,393	911	-79%
<b>Dom. Rep.</b>	21,811	7,500	-66%	2,725	718	-74%
<b>India</b>	3,100	4,299	39%	425	310	-27%

## Export Numbers for U.S. Pig Skins

Number of Pieces/Thousand \$U.S.

	Number of Pieces			Value Thousand \$		
	Jan 2015	Jan 2016	% Chg	Jan 2015	Jan 2016	% Chng
<b>World Total</b>	546,512	498,727	-9%	3,779	4,101	9%
<b>Mexico</b>	197,044	205,204	4%	1,811	2,310	28%
<b>Taiwan</b>	312,166	200,543	-36%	1,614	1,140	-29%
<b>Thailand</b>	26,602	82,293	209%	270	492	82%
<b>EU-28</b>	10,700	7,000	-35%	82	100	22%
<b>Vietnam</b>	0	2,135	-	0	34	-
<b>Japan</b>	0	1,552	-	0	24	-

**PLEASE NOTE:** In the past, the Number of Pieces column was inaccurate, typically over-inflating the actual amounts exported. In 2015, the US Government made changes to its reporting system, which we are hopeful will fix this problem. [CLICK HERE](#) for more information.

## Cattle on Feed Summary

### National Agricultural Statistics Service, USDA

[\(Available Here\)](#)

**Released February 19, 2016**

#### United States Cattle on Feed Down Slightly

Cattle and calves on feed for the slaughter market in the United States for feedlots with capacity of 1,000 or more head totaled 10.7 million head on February 1, 2016. The inventory was slightly below February 1, 2015.

Placements in feedlots during January totaled 1.78 million head, 1 percent below 2015. Net placements were 1.72 million head. During January, placements of cattle and calves weighing less than 600 pounds were 340,000 head, 600-699 pounds were 365,000 head, 700-799 pounds were 494,000 head, and 800 pounds and greater were 580,000 head.

Marketings of fed cattle during January totaled 1.59 million head, 2 percent below 2015. Marketings are the lowest for January since the series began in 1996.

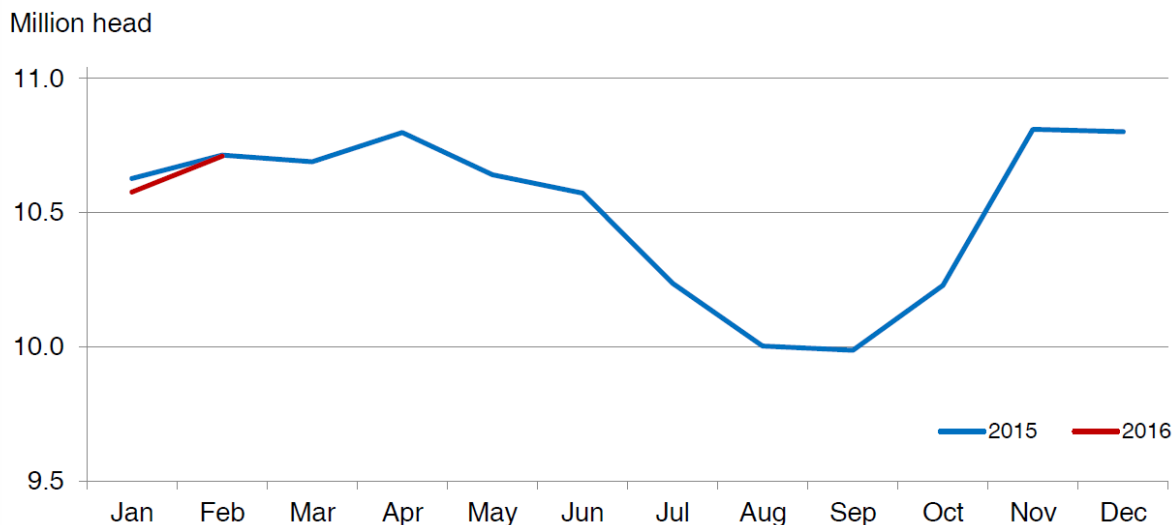
Other disappearance totaled 56,000 head during January, 27 percent below 2015. Other disappearance are the lowest for January since the series began in 1996.

#### 2015 Cattle on Feed and Annual Size Group Estimates

Cattle and calves on feed for slaughter market in the United States for feedlots with capacity of 1,000 or more head represented 80.3 percent of all cattle and calves on feed in the United States on January 1, 2016, down 1 percent from the 81.6 percent on January 1, 2015.

Marketings of fed cattle for feedlots with capacity of 1,000 or more head during 2015 represented 87.2 percent of total cattle marketed from all feedlots in the United States, down slightly from 2014.

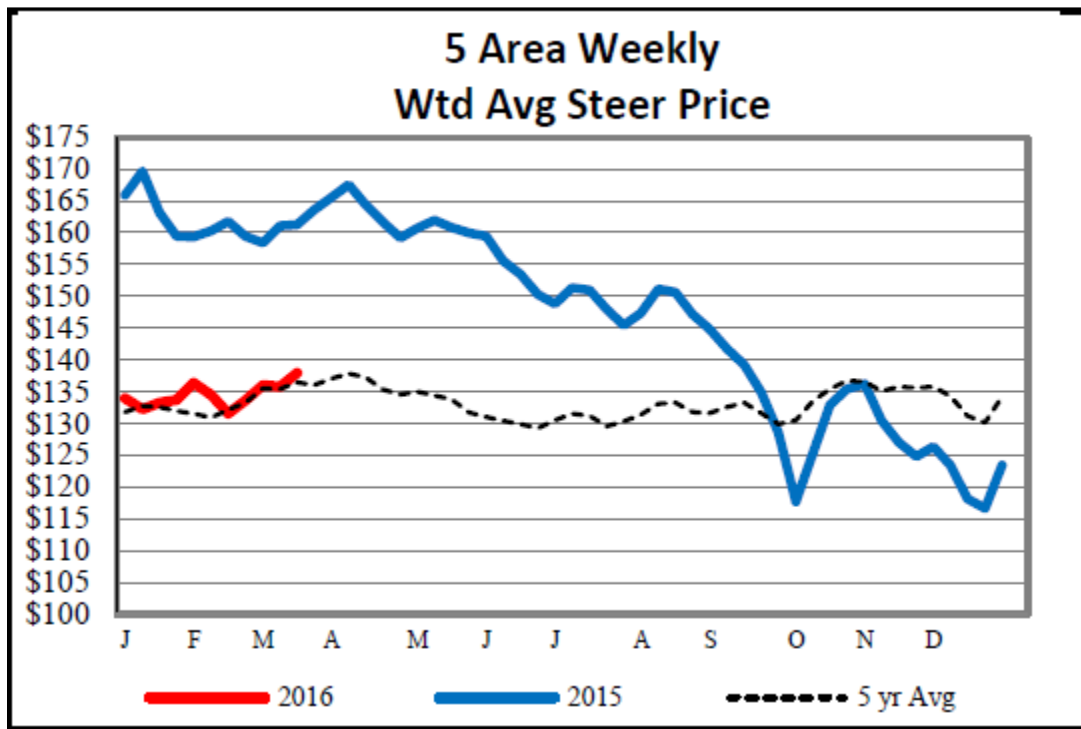
#### **Cattle on Feed Inventory on 1,000+ Capacity Feedlots – United States**

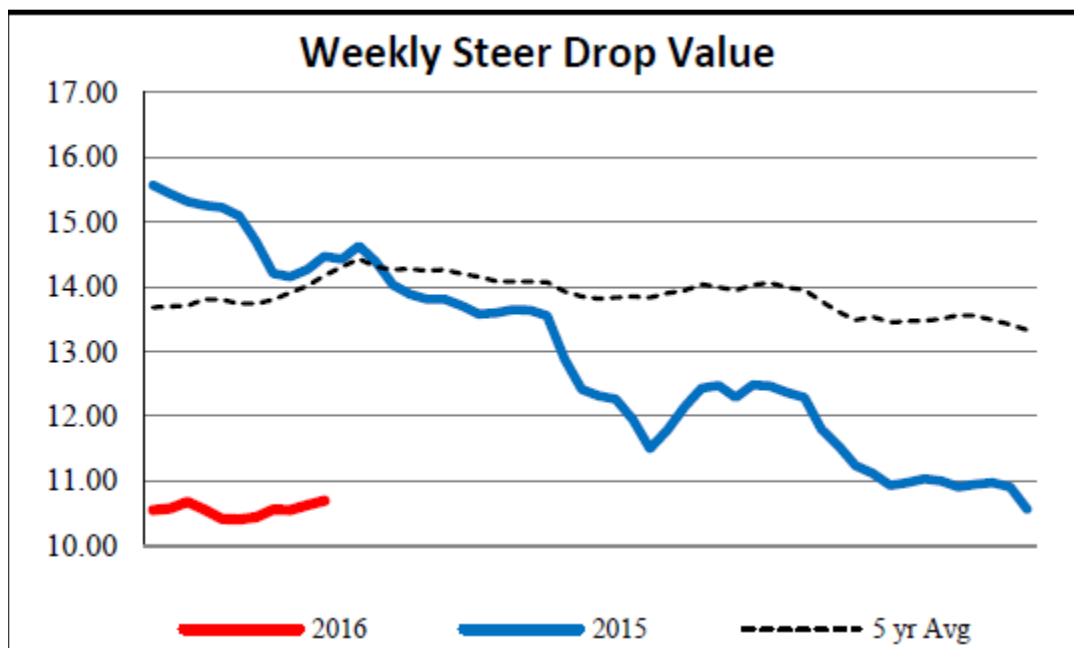


**Weekly Estimated Slaughter Statistics  
Weekly Livestock, Meat and Grain Highlights  
([Available Here](#))  
As of March 14, 2016**

	<b>This Week</b>	<b>Change from Last Week</b>	<b>Change from Year Ago</b>
<b>Hogs</b>			
Weekly Est. Hog Slaughter	2,215,000	-0.2%	-0.5%
YTD. Est. Hog Slaughter	23,059,000		-0.4%
<b>Cattle</b>			
Weekly Est. Cattle Slaughter	536,000	0.6%	1.5%
YTD Est. Cattle Slaughter	5,536,000		3.0%

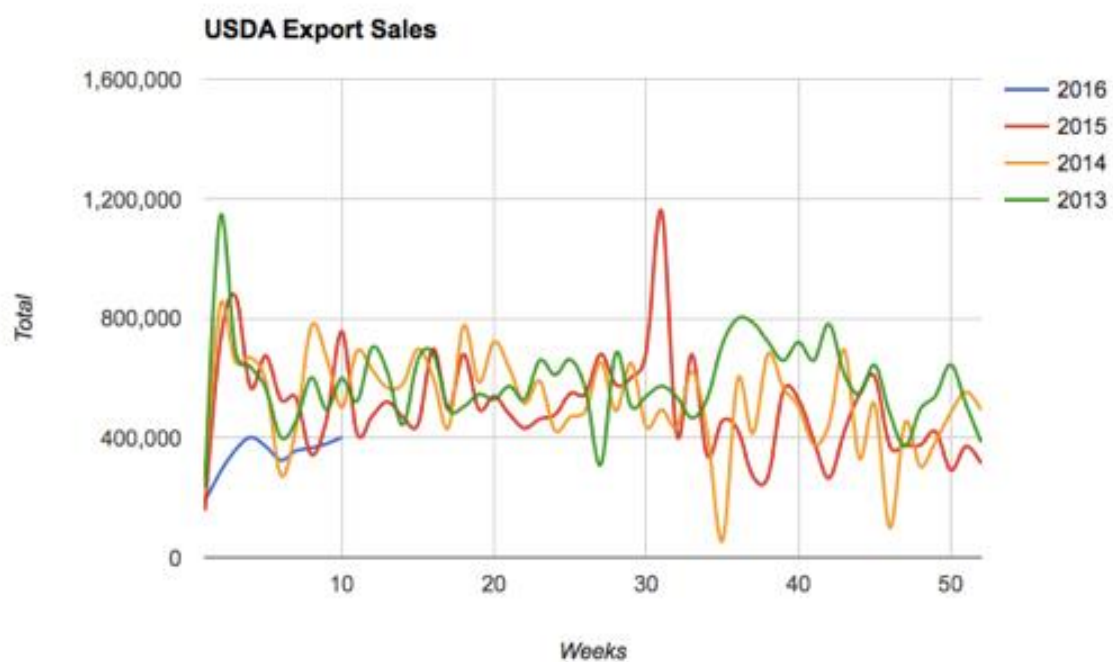
**(Steer Price and Drop Value Charts [Available Here](#))  
As of March 11, 2016**



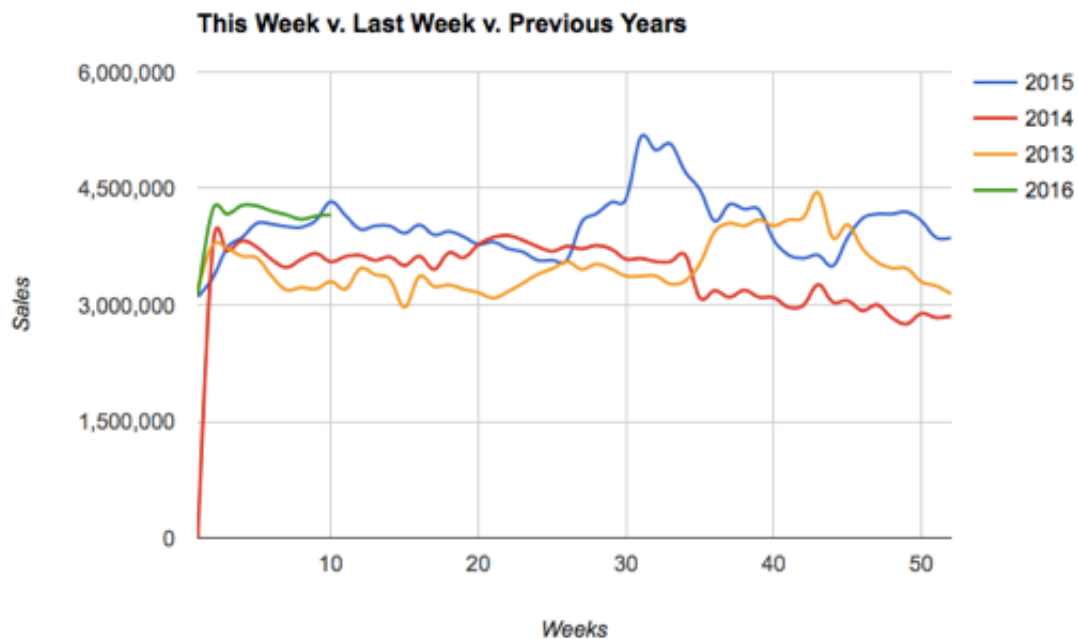


Charts Courtesy of the Hidenet.com:

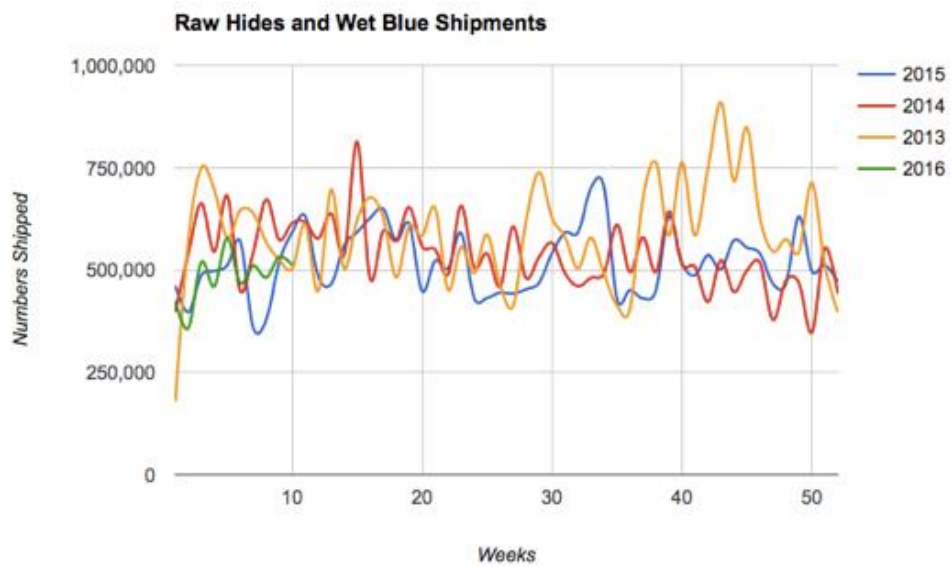
**Exports**



**Combined Outstanding incrementally higher**



**Combined Shipments down 4%**



**USDA Weekly Export Sales Statistics**  
**For the Week Ending March 3, 2016**  
**([Available Here](#))**

Hides and Skins: Net sales of 471,100 pieces for 2016 were up 17 percent from the previous week and 42 percent from the prior-4 week average. Whole cattle hide sales of 468,100 pieces--a marketing-year high--were primarily for China (252,600 pieces), South Korea (112,500 pieces), Thailand (60,600 pieces), and Mexico (20,700 pieces). Reductions were reported for India (100 pieces). Exports of 402,300 pieces were up 6 percent from the previous week and 13 percent from the prior 4-week average. Whole cattle hide exports of 398,400 pieces were primarily to China (271,200 pieces), South Korea (51,500 pieces), Mexico (25,600 pieces), Thailand (18,100 pieces), and Taiwan (17,400 pieces). Net sales of 52,800 wet blues for 2016 were down 68 percent from the previous week and 61 percent from the prior 4-week average. Increases were reported for Mexico (47,200 grain splits and 4,400 unsplit), Thailand (9,600 unsplit and 2,700 grain splits), Hong Kong (3,200 unsplit and 2,800 grain splits), and South Korea (4,600 grain splits). Reductions were reported for China (13,200 grain splits and 5,500 unsplit), Italy (1,400 grain splits and 600 unsplit), Vietnam (500 grain splits), India (300 grain splits), and Japan (200 grain splits). Exports of 109,800 wet blues were down 28 percent from the previous week and 24 percent from the prior 4-week average. Exports were primarily to Italy (28,600 unsplit and 3,100 grain splits), China (16,600 unsplit and 1,800 grain splits), Mexico (11,400 grain splits and 5,200 unsplit), and Vietnam (8,000 unsplit and 7,900 grain splits). Net sales of splits totaling 2,456,600 pounds for 2016 reported for China (2,576,600 pounds), were partially offset by reductions for South Korea (73,800 pounds), Vietnam (36,700 pounds), Italy (6,300 pounds), and Hong Kong (3,400 pounds). Exports of 568,900 pounds were reported to China (402,600 pounds), Vietnam (163,200 pounds) and South Korea (3,000 pounds).

WEEKLY NET SALES ACTIVITY COUNTRY	WHOLE				WET BLUES		
	CATTLE HIDES 1601	CALF SKINS 1602	KIP SKINS 1603	CROUPONS 1604	UNSPLIT 1606	GRAIN SPLIT 1607	DROP SPLITS 1608
	THOUSAND UNITS						
GERMANY	1.4						
ITALY	0.7				-0.6	-1.4	-6.3
JAPAN	8.6					-0.2	
TAIWAN	5.2						
CHINA	252.6		3.0		-5.5	-13.2	2,576.6
INDIA	-0.1					-0.3	
HG KONG	0.1				3.2	2.8	-3.4
KOR REP	112.5					4.6	-73.8
THAILND	60.6				9.6	2.7	
VIETNAM	5.9					-0.5	-36.7
DOM REP					-0.1		
MEXICO	20.7				4.4	47.2	
NET SALES	468.1	0.0	3.0	0.0	11.1	41.7	2,456.6
WEEKLY EXPORTS	398.4	0.0	3.9	0.0	78.3	31.5	568.9
ACCUM. EXPORTS	3,075.7	6.5	54.5	0.0	876.2	421.0	10,578.7
OUTSTANDING SALES	3,074.3	0.0	20.9	0.0	589.5	496.9	14,888.6

