



November 2014

# USHSLA INFO EXCHANGE

1150 Connecticut Ave NW, 12<sup>th</sup> Floor, Washington, DC 20036

[www.ushsla.org](http://www.ushsla.org) (202) 587-4250

## U.S. Statistics

### Export Numbers for U.S. Bovine Fresh/Wet Salted Hides

Number of Pieces/Thousand \$U.S.\*

	Number of Pieces			Value Thousand \$		
	Jan. - Sept 2013	Jan. - Sept 2014	% Chg	Jan. - Sept 2013	Jan. - Sept 2014	% Chng
<b>World</b>	27,356,610	19,218,961	-30%	1,381,644	1,390,534	1%
<b>China/HK</b>	16,673,097	11,653,547	-30%	884,028	887,827	0%
<b>Korea</b>	4,398,162	2,842,718	-35%	228,818	219,316	-4%
<b>Taiwan</b>	1,779,190	1,310,962	-26%	84,540	91,748	9%
<b>Mexico</b>	1,248,323	1,130,367	-9%	58,326	72,849	25%
<b>EU-28</b>	1,157,062	1,236,443	7%	38,832	56,912	47%
<b>Japan</b>	625,039	399,241	-36%	21,908	22,385	2%
<b>Thailand</b>	398,310	214,624	-46%	16,603	17,490	5%
<b>Vietnam</b>	580,453	137,890	-76%	29,809	8,743	-71%
<b>Turkey</b>	173,763	119,560	-31%	5,458	6,087	12%
<b>Indonesia</b>	76,675	31,804	-59%	5,729	2,846	-50%
<b>Canada</b>	64,330	17,470	-73%	3,733	929	-75%
<b>Israel</b>	67,002	52,369	-22%	776	852	10%
<b>Colombia</b>	3,844	21,556	461%	116	647	458%
<b>Pakistan</b>	29,341	12,003	-59%	398	564	42%
<b>Dom. Rep.</b>	8,282	9,100	10%	325	452	39%
<b>India</b>	42,955	14,495	-66%	1,285	337	-74%
<b>Kazakhstan</b>	0	1,697	-	0	196	-
<b>Bosnia</b>	0	1,320	-	0	128	-
<b>Singapore</b>	97	1,878	1836%	3	59	1867%
<b>Philippines</b>	3,318	7,000	111%	149	59	-60%
<b>Brazil</b>	0	900	-	0	36	-
<b>Bahamas</b>	365	543	49%	18	33	83%
<b>UAE</b>	331	1,165	252%	10	21	110%
<b>Australia</b>	800	170	-79%	24	10	-58%
<b>Costa Rica</b>	32	34	6%	3	3	0%
<b>Honduras</b>	0	105	-	0	3	-

**PLEASE NOTE: NUMBER OF PIECES LISTED ARE INNACURATE. The USDA Foreign Agricultural Service GATS, in conjunction with U.S. Census Bureau, produce these statistics. U.S.**

Census Bureau estimates the quantity of hides and skins exported based on the declared VALUE of a shipment compared to historical averages. Therefore, the above QUANTITIES or NUMBER OF PIECES are over-inflated due to very high export values. U.S. Census is investigating these discrepancies and considering ways to remedy the problem. USHSLA reports these numbers purely for reference.

### Export Numbers for U.S. Pig Skins

Number of Pieces/Thousand \$U.S.

	Number of Pieces			Value Thousand \$		
	Jan. - Sept 2013	Jan. - Sept 2014	% Chg	Jan. - Sept 2013	Jan. - Sept 2014	% Chng
<b>World Total</b>	3,934,234	5,215,760	33%	44,162	43,686	-1%
<b>Mexico</b>	1,925,159	1,998,148	4%	23,116	21,500	-7%
<b>Taiwan</b>	1,014,052	2,375,300	134%	10,902	13,750	26%
<b>Thailand</b>	315,800	384,729	22%	3,181	3,966	25%
<b>Korea</b>	0	175,260	-	0	1,753	-
<b>Vietnam</b>	495,600	105,899	-79%	4,997	1,029	-79%
<b>EU-28</b>	105,030	113,853	8%	1,294	1,010	-22%
<b>China/HK</b>	22,553	55,328	145%	297	553	86%
<b>Japan</b>	55,648	5,839	-90%	362	111	-69%
<b>Colombia</b>	0	1,404	-	0	14	-

### Export Numbers for U.S. Wet Blue Hides

Number of Pieces/Thousand \$U.S.\*\*

	Number of Pieces			Value Thousand \$		
	Jan. - Sept 2013	Jan. - Sept 2014	% Chg	Jan. - Sept 2013	Jan. - Sept 2014	% Chng
<b>World Total</b>	10,420,033	8,035,003	-23%	580,261	702,705	21%
<b>China/HK</b>	3,818,290	2,975,527	-22%	215,130	261,903	22%
<b>EU-28</b>	2,327,620	1,809,119	-22%	134,174	168,138	25%
<b>Vietnam</b>	873,990	994,993	14%	52,021	80,927	56%
<b>Taiwan</b>	560,437	461,710	-18%	33,891	40,145	18%
<b>Thailand</b>	395,604	413,012	4%	25,064	35,888	43%
<b>Mexico</b>	1,209,633	557,649	-54%	40,955	35,355	-14%
<b>Dom. Rep.</b>	530,003	328,533	-38%	31,473	33,773	7%
<b>Korea</b>	482,237	240,226	-50%	35,090	21,794	-38%
<b>Uruguay</b>	28,683	101,231	253%	2,470	9,828	298%
<b>Japan</b>	77,578	87,705	13%	3,793	8,632	128%
<b>India</b>	82,177	64,653	-21%	4,627	6,245	35%
<b>Indonesia</b>	3,973	645	-84%	56	75	34%

\*Source: USDA Foreign Agricultural Service GATS; U.S. Census Bureau. Please note, wet blue numbers include cattle/equine full grains, top grains and drop splits combined, and also employ estimates as noted on the previous page. Therefore, Quantities or Number of Pieces listed are inaccurate.

## Cattle on Feed Summary

**National Agricultural Statistics Service, USDA**

**(Available Here)**

**Released October 24, 2014**

### United United States Cattle on Feed Down 1 Percent

Cattle and calves on feed for slaughter market in the United States for feedlots with capacity of 1,000 or more head totaled 10.1 million head on October 1, 2014. The inventory was 1 percent below October 1, 2013. The inventory included 6.46 million steers and steer calves, up 1 percent from the previous year. This group accounted for 64 percent of the total inventory. Heifers and heifer calves accounted for 3.55 million head, down 3 percent from 2013.

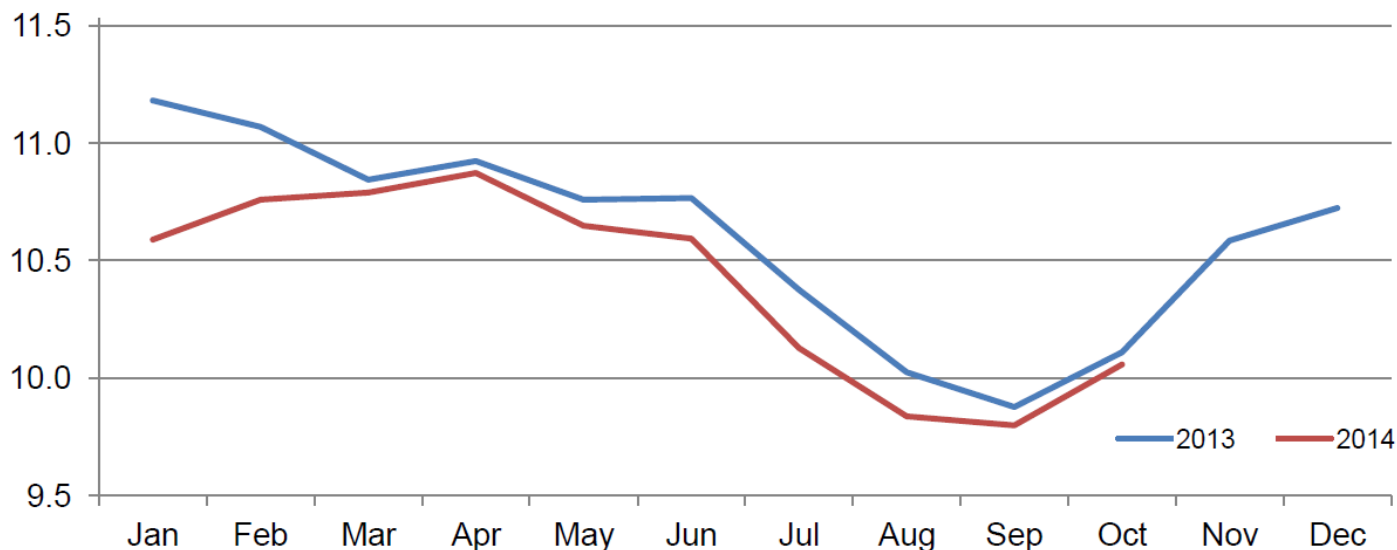
Placements in feedlots during September totaled 2.01 million, 1 percent above 2013. Net placements were 1.94 million head. During September, placements of cattle and calves weighing less than 600 pounds were 460,000, 600-699 pounds were 340,000, 700-799 pounds were 437,000, and 800 pounds and greater were 770,000. For the month of September, placements are the second lowest since the series began in 1996.

Marketings of fed cattle during September totaled 1.68 million, 1 percent below 2013.

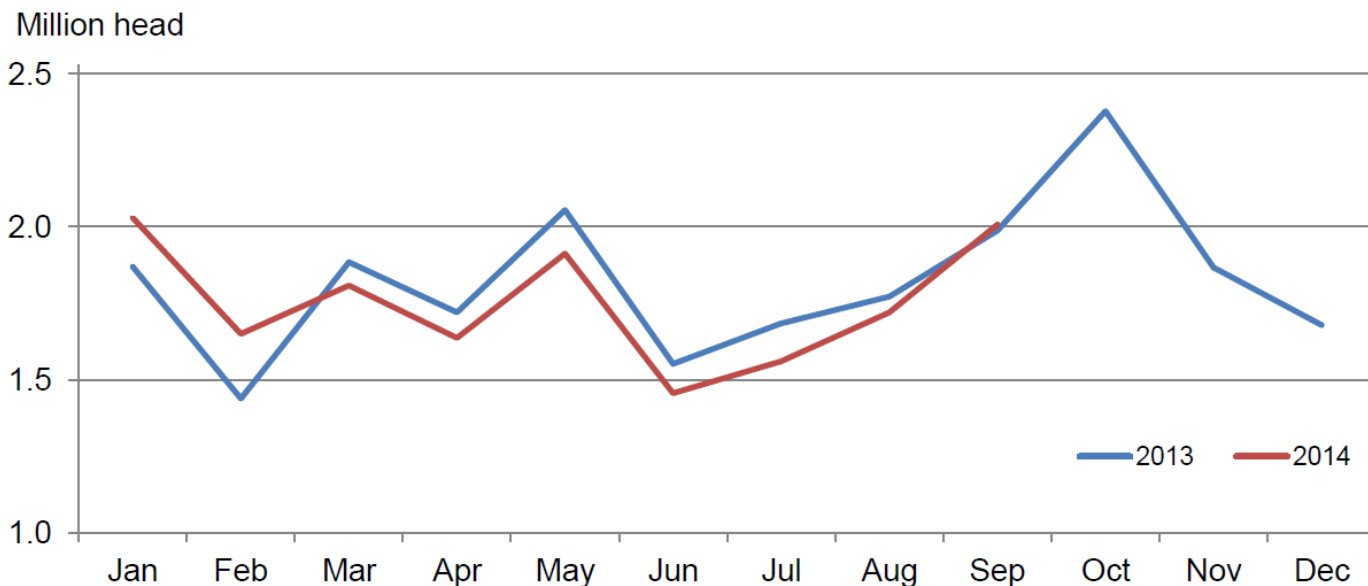
Other disappearance totaled 65,000 during September, 5 percent above 2013.

### **Cattle on Feed Inventory on 1,000+ Capacity Feedlots – United States**

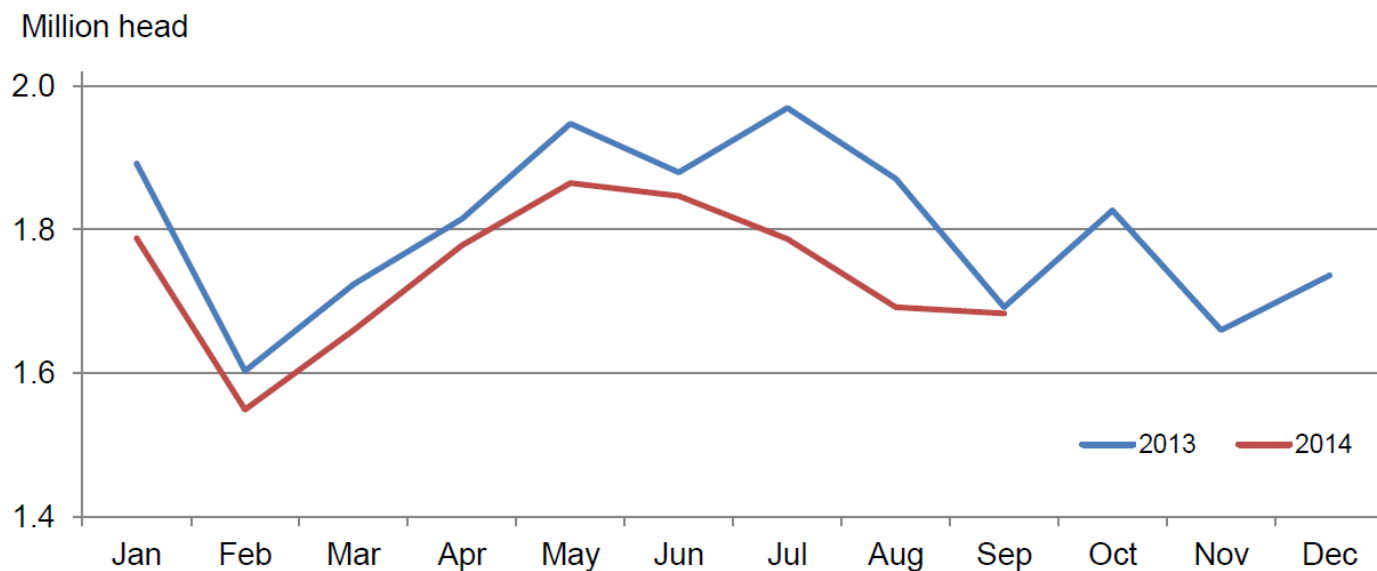
Million head



### Number of Cattle Placed on 1000+ Capacity Feedlots – United States

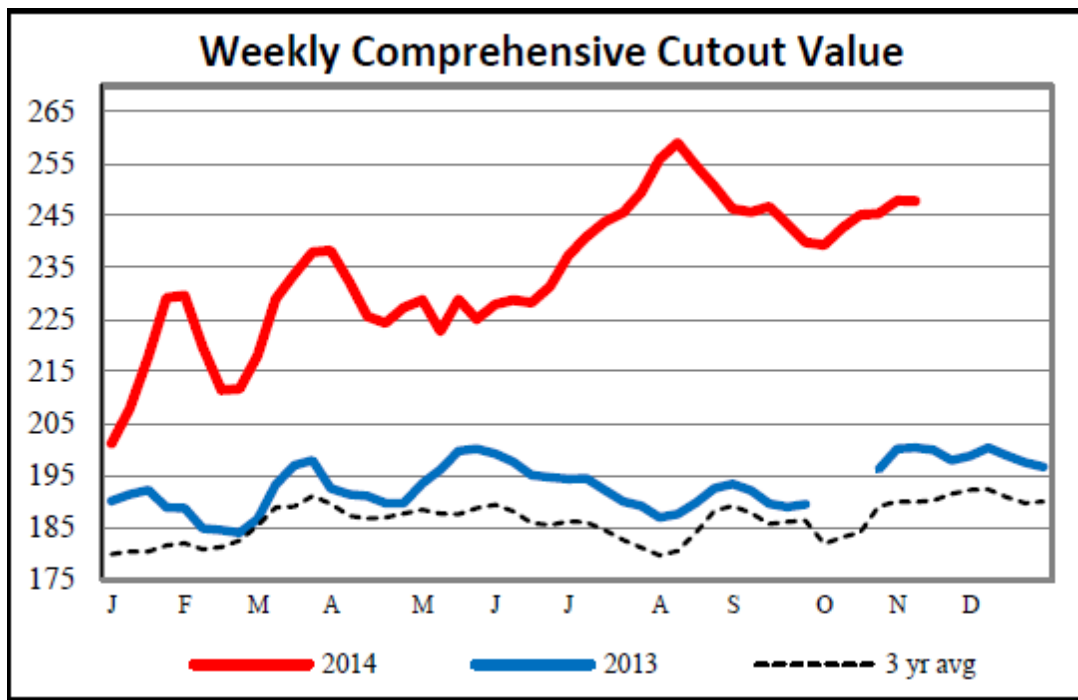


### Number of Cattle Marketed on 1,000+ Capacity Feedlots – United States



## 2014 Actual Slaughter Under Federal Inspection ([Available Here](#))

	<b>Total Cattle (Thou. Hd)</b>	<b>Beef Production (Mil Lbs)</b>	<b>Av. Live Weight (Lbs)</b>	<b>Av. Dressed Weight (Lbs)</b>
Jan 1 – Nov. 7, 2014	25,194	20,208	1,327	804
% changed from 2013	-7.0%	-6.0%	1.0%	1.1%



**Weekly Estimated Slaughter Statistics**  
**Weekly Livestock, Meat and Grain Highlights**  
**([Available Here](#))**  
**As of November 10, 2014**

	<b>This Week</b>	<b>Change from Last Week</b>	<b>Change from Year Ago</b>
<b>Hogs</b>			
Weekly Est. Hog Slaughter	2,232,000	1.8%	-2.4%
YTD. Est. Hog Slaughter	89,873,000		-5.2%
<b>Cattle</b>			
Weekly Est. Cattle Slaughter	564,000	2.0%	-7.7%
YTD Est. Cattle Slaughter	25,646,000		-7.2%

## USDA Weekly Export Sales Statistics For the Week Ending November 6, 2014 ([Available Here](#))

**Hides and Skins:** Net sales of 501,800 pieces, all whole cattle hides, were up 55 percent from the previous week and 36 percent from the prior 4-week average. The primary destinations were China (331,900 pieces), South Korea (101,400 pieces), Taiwan (22,500 pieces), and the Netherlands (20,400 pieces). Decreases were reported for Japan (500 pieces). Exports of 403,800 pieces were up 32 percent from the previous week and 21 percent from the prior 4-week average. Whole cattle hide exports of 399,700 pieces were primarily to China (252,600 pieces), South Korea (90,300 pieces), Mexico (15,500 pieces), Taiwan (14,100 pieces), and Italy (9,300 pieces).

Net sales of 13,100 wet blues for 2014 were up 83 percent from the previous week, but down 86 percent from the prior 4-week average. Increases reported for China (17,700 unsplit), Italy (9,000 unsplit), South Korea (7,100 grain splits), Thailand (5,700 unsplit), and Mexico (4,600 grain splits and 1,100 unsplit), were partially offset by decreases for South Korea (20,000 unsplit), Italy (11,400 grain splits), and Taiwan (4,600 unsplit). Net sales reductions of 17,000 wet blues for 2015 resulted as increases for South Korea (23,400 unsplit), Italy (11,400 grain splits), China (10,100 unsplit), and Taiwan (4,600 unsplit), were more than offset by decreases for Hong Kong (37,000 grain splits) and South Korea (29,400 grain splits). Exports of 94,800 wet blues were primarily to China (36,000 unsplit and 5,500 grain splits), Mexico (16,700 grain splits and 1,100 unsplit), Vietnam (12,300 unsplit), and South Korea (4,800 grain splits and 3,400 unsplit). Net sales of splits totaling 520,900 pounds for 2014 were for South Korea (454,500 pounds) and China (123,800 pounds). Decreases were reported for Hong Kong (57,400 pounds). Net sales reductions of splits totaling 26,000 pounds for 2015 were for South Korea. Exports of 782,100 pounds were reported to South Korea (407,000 pounds), Hong Kong (203,400 pounds), and China (171,800 pounds).

WEEKLY NET SALES ACTIVITY COUNTRY	WHOLE				WET BLUES		
	CATTLE HIDES 1601	CALF SKINS 1602	KIP SKINS 1603	CROUPONS 1604	UNSPLIT 1606	GRAIN SPLIT 1607	DROP SPLITS 1608
	THOUSAND UNITS						
GERMANY	0.1						
ITALY	4.9				9.0	--11.4	
NETHLDS	20.4						
JAPAN	--0.5				--0.2		
TAIWAN	22.5				--4.6		
CHINA	331.9				17.7	--0.2	123.8
HG KONG	0.7				2.0		--57.4
INDNSIA	2.5						
KOR REP	101.4				--20.0	7.1	454.5
PAKISTN	0.7						
THAILND	0.5				5.7		
VIETNAM	2.0				2.3		
MEXICO	14.6				1.1	4.6	
NET SALES	501.8	0.0	0.0	0.0	13.0	0.1	520.9
WEEKLY EXPORTS	399.7	0.0	4.1	0.0	67.7	27.1	782.1
ACCUM. EXPORTS	18,088.9	17.8	187.1	0.0	4,669.0	1,528.8	23,589.3
OutSTANDING SALES	2,427.6	5.5	44.4	0.0	389.9	238.5	8,132.7

