



USHSLA INFO EXCHANGE

1150 Connecticut Ave NW, 12th Floor, Washington, DC 20036
www.ushsla.org (202) 587-4250

Trade Statistics

Export Numbers for U.S. Bovine Fresh/Wet Salted Hides

Number of Pieces/Thousand \$U.S.*****

	Number of Pieces			Value Thousand \$		
	Jan. - May 2013	Jan. - May 2014	% Chg	Jan. - May 2013	Jan. - May 2014	% Chng
World	14,979,202	12,951,290	-14%	762,711	798,693	5%
China/HK	9,067,489	7,989,470	-12%	483,291	520,248	8%
Korea	2,562,516	1,850,623	-28%	137,039	119,169	-13%
Taiwan	1,043,217	960,707	-8%	50,529	56,511	12%
EU-28	653,641	854,177	31%	21,345	34,006	59%
Mexico	609,123	562,167	-8%	28,575	32,551	14%
Japan	279,674	335,107	20%	10,134	14,577	44%
Thailand	214,116	131,937	-38%	9,200	9,159	0%
Vietnam	333,049	105,121	-68%	16,743	5,911	-65%
Turkey	75,034	70,522	-6%	1,375	3,112	126%
Indonesia	12,120	9,439	-22%	711	900	27%
Israel	47,631	29,982	-37%	575	590	3%
Pakistan	7,600	11,487	51%	132	517	292%
Canada	34,019	8,228	-76%	2,004	401	-80%
Dom. Rep.	2,636	7,590	188%	128	345	170%
Colombia	1,652	11,135	574%	50	334	568%
Kazakhstan	0	1,697	-	0	196	-
India	16,302	3,427	-79%	420	61	-85%
Philippines	0	7,000	-	0	59	-
Bahamas	0	365	-	0	18	-
Australia	0	170	-	0	10	-
UAE	331	800	142%	10	10	0%
Costa Rica	32	34	6%	3	3	0%
Honduras	0	105	-	0	3	-

PLEASE NOTE: NUMBER OF PIECES LISTED ARE INNACURATE. The USDA Foreign Agricultural Service GATS, in conjunction with U.S. Census Bureau, produce these statistics. U.S. Census Bureau estimates the quantity of hides and skins exported based on the declared VALUE of a shipment compared to historical averages. Therefore, the above QUANTITIES or NUMBER OF PIECES are over-inflated due to very high export values. U.S. Census is investigating these discrepancies and considering ways to remedy the problem. USHSLA reports these numbers purely for reference.

Export Numbers for U.S. Pig Skins

Number of Pieces/Thousand \$U.S.

	Number of Pieces			Value Thousand \$		
	Jan. - May 2013	Jan. - May 2014	% Chg	Jan. - May 2013	Jan. - May 2014	% Chng
World Total	2,116,324	2,718,677	28%	24,488	23,268	-5%
Mexico	1,048,647	1,072,682	2%	12,296	11,535	-6%
Taiwan	526,493	1,250,088	137%	6,724	7,829	16%
Thailand	160,400	222,899	39%	1,581	2,216	40%
Vietnam	274,600	105,899	-61%	2,661	1,029	-61%
EU-28	65,186	64,853	-1%	856	604	-29%
Japan	22,394	2,256	-90%	129	55	-57%

Export Numbers for U.S. Wet Blue Hides

Number of Pieces/Thousand \$U.S.**

	Number of Pieces			Value Thousand \$		
	Jan. - May 2013	Jan. - May 2014	% Chg	Jan. - May 2013	Jan. - May 2014	% Chng
World Total	6,045,509	5,295,216	-12%	335,607	380,459	13%
China/HK	2,385,936	1,940,996	-19%	135,719	139,401	3%
EU-28	1,250,734	1,168,937	-7%	71,965	91,341	27%
Vietnam	535,718	792,289	48%	32,128	58,332	82%
Thailand	101,510	263,912	160%	5,797	19,500	236%
Taiwan	307,365	290,936	-5%	19,055	19,435	2%
Mexico	757,855	372,018	-51%	23,940	16,083	-33%
Korea	325,147	162,442	-50%	24,179	12,705	-47%
Dom. Rep.	256,207	152,792	-40%	15,561	11,357	-27%
Uruguay	28,683	60,200	110%	2,470	4,880	98%
India	52,558	51,132	-3%	2,844	4,570	61%
Japan	22,679	38,917	72%	1,092	2,779	154%
Indonesia	3,973	645	-84%	323	75	-77%

***Source: USDA Foreign Agricultural Service GATS; U.S. Census Bureau. Please note, wet blue numbers include cattle/equine full grains, top grains and drop splits combined, and also employ estimates as noted on the previous page. Therefore, Quantities or Number of Pieces listed are Inaccurate.**

Cattle on Feed Summary

National Agricultural Statistics Service, USDA

(Available Here)

Released June 20, 2014

United States Cattle on Feed Down 2 Percent

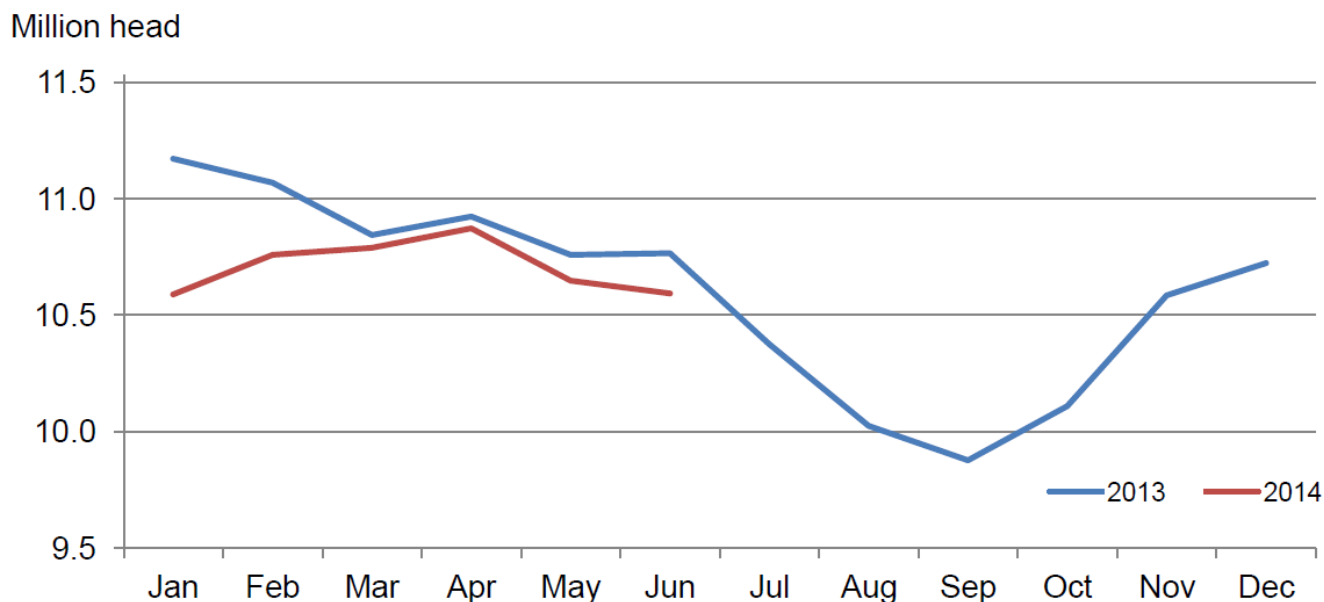
Cattle and calves on feed for slaughter market in the United States for feedlots with capacity of 1,000 or more head totaled 10.6 million head on June 1, 2014. The inventory was 2 percent below June 1, 2013.

Placements in feedlots during May totaled 1.91 million, 7 percent below 2013. Net placements were 1.81 million head. During May, placements of cattle and calves weighing less than 600 pounds were 435,000, 600-699 pounds were 290,000, 700-799 pounds were 477,000, and 800 pounds and greater were 710,000.

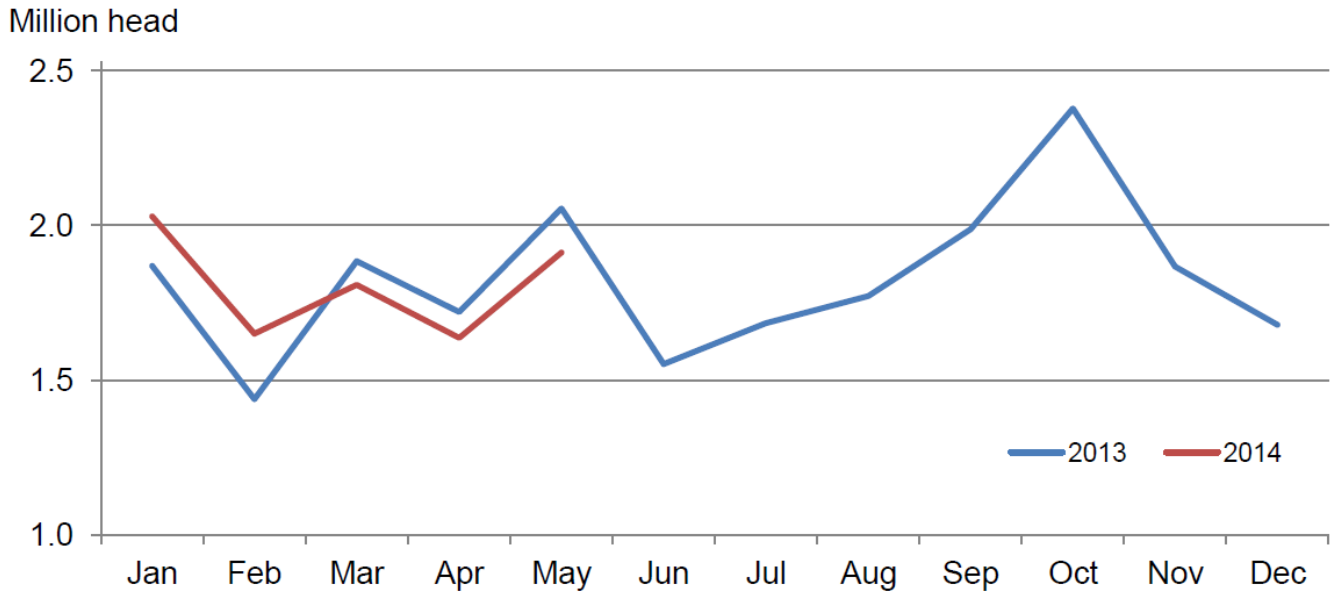
Marketings of fed cattle during May totaled 1.87 million, 4 percent below 2013. May marketings are the lowest for the month since the series began in 1996.

Other disappearance totaled 101,000 during May, 1 percent above 2013.

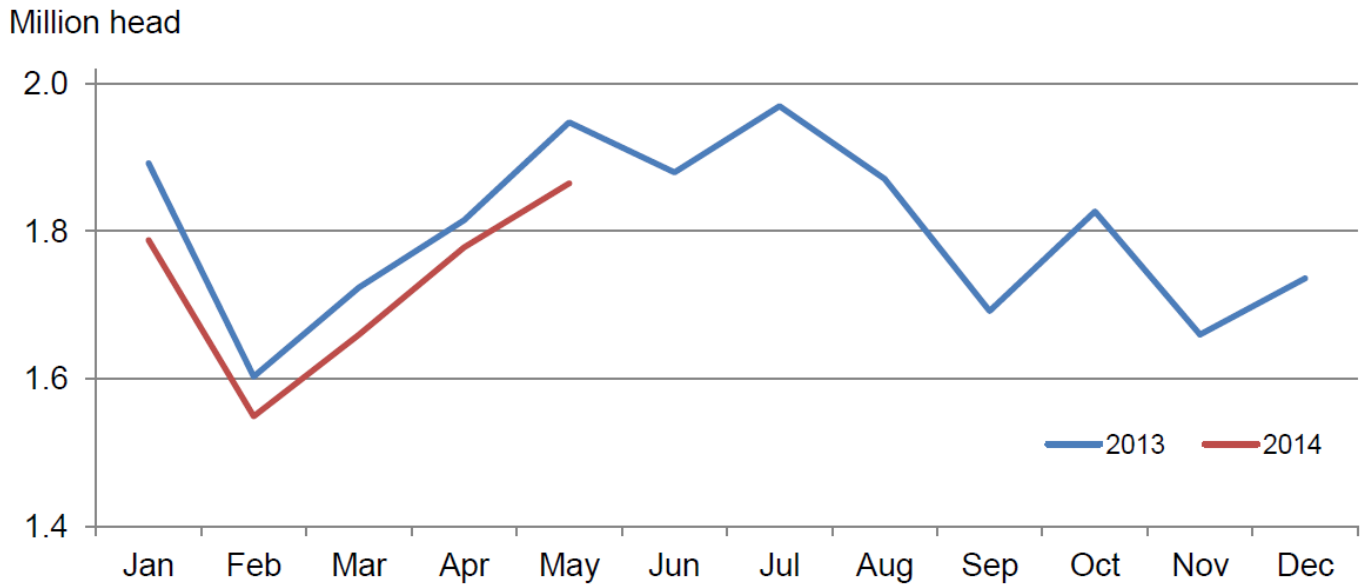
Cattle on Feed Inventory on 1,000+ Capacity Feedlots – United States



Number of Cattle Placed on 1,000+ Capacity Feedlots – United States

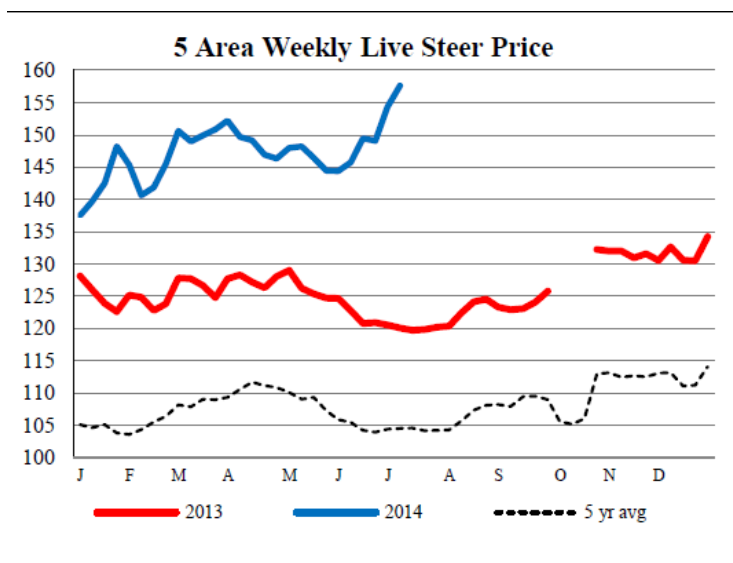


Number of Cattle Marketed on 1,000+ Capacity Feedlots – United States



2014 Actual Slaughter Under Federal Inspection ([Available Here](#))

	Total Cattle (Thou. Hd)	Beef Production (Mil Lbs)	Av. Live Weight (Lbs)	Av. Dressed Weight (Lbs)
Jan 1 – July 4, 2014	14,917	11,865	1,322	797
% changed from 2013	-5.8%	-5.2%	0.6%	0.9%



Weekly Estimated Slaughter Statistics Weekly Livestock, Meat and Grain Highlights ([Available Here](#)) As of July 7, 2014

	This Week	Change from Last Week	Change from Year Ago
Hogs			
Weekly Est. Hog Slaughter	1,627,000	-14.8%	-8.8%
YTD. Est. Hog Slaughter	53,565,000		-4.4%
Cattle			
Weekly Est. Cattle Slaughter	491,000	-20.2%	-11.8%
YTD Est. Cattle Slaughter	15,340,000		-6.5%

USDA Weekly Export Sales Statistics
For the Week Ending July 3, 2014
([Available Here](#))

U.S. EXPORT SALES FOR WEEK ENDING 7/3/2014

Hides and Skins: Net sales of 312,500 pieces reported for 2014 were down 23 percent from the previous week and 21 percent from the prior 4-week average. Whole cattle hides sales of 310,600 pieces were primarily for China (158,700 pieces), South Korea (113,400 pieces), Mexico (19,300 pieces), Hong Kong (6,300 pieces), and Thailand (4,800 pieces). Exports of 329,500 pieces (all whole cattle hides), were down 31 percent from the previous week and 27 percent from the prior 4-week average. The primary destinations were China (191,200 pieces), South Korea (70,100 pieces), Taiwan (24,500 pieces), and Mexico (17,600 pieces).

Net sales of 178,400 wet blues for 2014 were reported for China (45,900 unsplit and 25,300 grain splits), Mexico (25,400 grain splits and 17,700 unsplit), South Korea (20,700 unsplit and 5,500 grain splits), and Vietnam (22,000 unsplit). Decreases were reported for Vietnam (800 grain splits). Exports of 129,800 wet blues were primarily to Italy (34,200 unsplit and 3,200 grain splits), China (21,400 unsplit and 6,500 grain splits), Vietnam (9,600 unsplit and 4,700 grain splits), and Mexico (11,700 grain splits). Net sales of splits totaling 3,444,400 pounds for 2014 resulted as increases for South Korea (3,455,800 pounds), were partially offset by decrease for Vietnam (6,800 pounds) and China (4,600 pounds). Exports of 426,600 pounds were reported to South Korea (299,300 pounds) and China (127,400 pounds).

WEEKLY NET SALES ACTIVITY COUNTRY	WHOLE				WET BLUES		
	CATTLE HIDES 1601	CALF SKINS 1602	KIP SKINS 1603	CROUPONS 1604	UNSPLIT 1606	GRAIN SPLIT 1607	DROP SPLITS 1608
	THOUSAND UNITS						
ITALY	1.4		1.9		4.0		
JAPAN	3.1				3.1		
TAIWAN	3.1				1.0	3.0	
CHINA	158.7				45.9	25.3	--4.6
HG KONG	6.3						
KOR REP	113.4				20.7	5.5	3,455.8
THAILND	4.8				3.5		
VIETNAM	0.4				22.0	--0.8	--6.8
DOM REP						2.3	
MEXICO	19.3				17.7	25.4	
NET SALES	310.6	0.0	1.9	0.0	117.8	60.6	3,444.4
WEEKLY EXPORTS	329.5	0.0	0.0	0.0	93.6	36.2	426.6
ACCUM. EXPORTS	11,527.6	15.9	112.4	0.0	2,728.8	840.6	12,895.2
OUTSTANDING SALES	2,589.0	1.9	12.2	0.0	843.2	324.0	8,665.7