



November 2013

USHSLA INFO EXCHANGE

1150 Connecticut Ave NW, 12th Floor, Washington, DC 20036
www.ushsla.org (202) 587-4250

Trade Statistics

Export Numbers for U.S. Bovine Fresh/Wet Salted Hides Number of Pieces/Thousand \$U.S.*

	Number of Pieces			Value Thousand \$		
	Jan – Aug 2012	Jan – Aug 2013	% Chg	Jan – Aug 2012	Jan – Aug 2013	% Chng
World	19,020,510	24,343,189	28%	1,090,008	1,228,589	13%
China/HK	9,908,039	14,792,464	49%	620,326	782,343	26%
Korea	3,995,484	4,021,871	1%	202,884	209,681	3%
Taiwan	988,505	1,641,716	66%	71,586	78,349	9%
Mexico	1,066,371	1,084,878	2%	53,410	50,513	-5%
EU-28	1,030,601	934,790	-9%	41,630	31,351	-25%
Vietnam	613,792	530,356	-14%	39,540	27,079	-32%
Japan	533,865	540,349	1%	21,132	19,071	-10%
Thailand	382,576	350,013	-9%	21,499	14,355	-33%
Turkey	266,935	158,404	-41%	10,308	4,644	-55%
Indonesia	4,183	60,734	1352%	44	4,391	9880%
Canada	64,204	61,249	-5%	4,004	3,553	-11%
India	10,706	32,502	204%	621	817	32%
Israel	87,349	64,630	-26%	823	746	-9%
Pakistan	912	28,408	3015%	57	356	525%
Macau	0	6,469	-	0	291	-
Dom. Rep.	3,464	6,765	95%	187	278	49%
Chile	0	2,420	-	0	162	-
Philippines	0	3,318	-	0	149	-
Haiti	0	12,358	-	0	135	-
Colombia	150	3,278	2085%	4	99	2375%
Tajikistan	600	750	25%	24	48	100%
Trin. & Tob.	782	1,822	133%	35	42	20%
N. Zealand	0	924	-	0	42	-
Australia	0	800	-	0	24	-
Cambodia	4,580	568	-88%	137	20	-85%
Bahamas	638	365	-43%	22	18	-18%
UAE	659	331	-50%	20	10	-50%
Lebanon	0	315	-	0	8	-

****Source: USDA Foreign Agricultural Service Global Agricultural Trade System. Please note, these numbers do not line up with federally inspected slaughter numbers due to the way the GATS system records number of pieces exported.**

Export Numbers for U.S. Pig Skins

Number of Pieces/Thousand \$U.S.*

	Number of Pieces			Value Thousand \$		
	Jan – Aug 2012	Jan – Aug 2013	% Chg	Jan – Aug 2012	Jan – Aug 2013	% Chng
World Total	3,234,204	3,491,452	8%	33,780	39,803	18%
Mexico	1,585,141	1,738,195	10%	17,129	20,818	22%
Taiwan	804,043	849,209	6%	8,695	9,751	12%
Vietnam	339,510	446,400	31%	3,120	4,485	44%
Thailand	261,836	292,000	12%	2,379	2,949	24%
EU-28	45,132	101,530	125%	888	1,244	40%
China/HK	128,727	22,553	-82%	901	297	-67%
Japan	3,085	41,173	1235%	21	248	1081%
Ecuador	0	392	-	0	12	-

Export Numbers for U.S. Wet Blue Hides

Number of Pieces/Thousand \$U.S.*

	Number of Pieces			Value Thousand \$		
	Jan – Aug 2012	Jan – Aug 2013	% Chg	Jan – Aug 2012	Jan – Aug 2013	% Chng
World Total	6,411,264	9,306,533	45%	409,367	516,027	26%
China/HK	2,349,670	3,527,821	50%	171,895	197,679	15%
EU-28	1,552,473	1,898,662	22%	101,134	109,131	8%
Vietnam	572,391	833,296	46%	39,462	49,506	25%
Mexico	831,163	1,068,930	29%	23,404	36,313	55%
Korea	101,947	452,222	344%	7,782	32,844	322%
Taiwan	220,331	519,567	136%	15,572	31,412	102%
Dom. Rep.	491,198	473,231	-4%	30,232	27,802	-8%
Thailand	145,088	338,793	134%	10,314	20,480	99%
India	168,330	407,188	142%	12,155	24,236	99%
Japan	98,566	63,352	-36%	5,830	3,063	-47%
Uruguay	21,052	28,683	36%	1,586	2,470	56%
Turkey	2,498	24,024	862%	150	1,375	817%
Chile	0	1,959	-	0	112	-
Indonesia	0	3,973	-	0	56	-

Togo	0	3,600	-	0	25	-
Brazil	1,645	3,625	120%	164	28	-83%

Cattle on Feed Summary

National Agricultural Statistics Service, USDA

(Available Here)

Released October 31, 2013

United States Cattle on Feed Down 8 Percent

Cattle and calves on feed for slaughter market in the United States for feedlots with capacity of 1,000 or more head totaled 10.1 million head on October 1, 2013. The inventory was 8 percent below October 1, 2012. The inventory included 6.44 million steers and steer calves, down 7 percent from the previous year. This group accounted for 64 percent of the total inventory. Heifers and heifer calves accounted for 3.66 million head, down 8 percent from 2012.

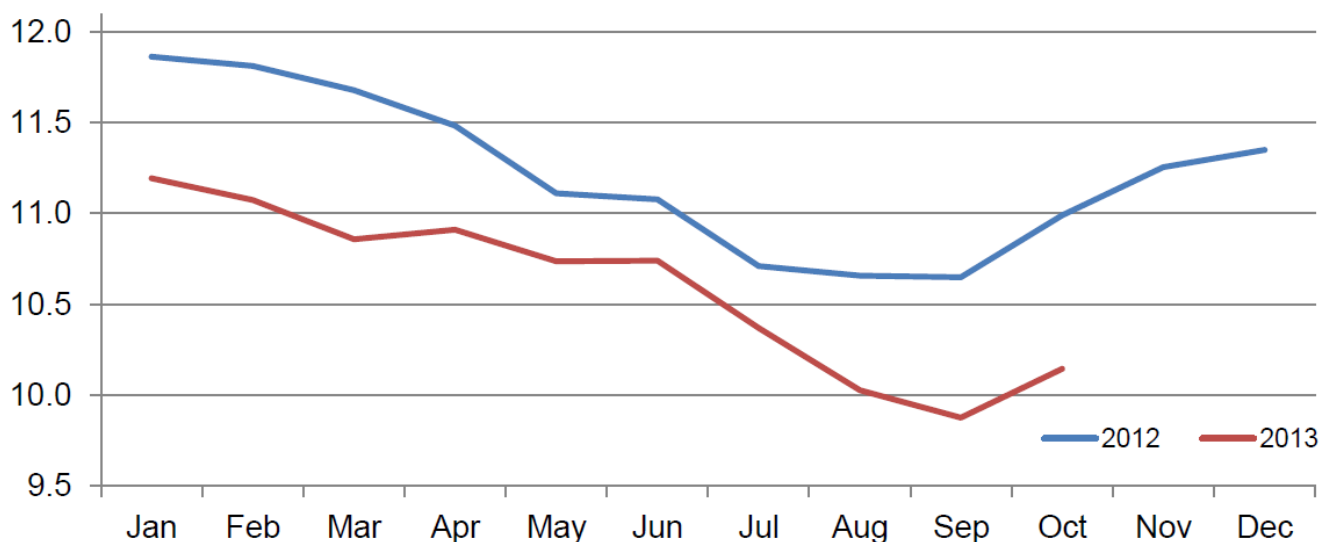
Placements in feedlots during September totaled 2.03 million, 1 percent above 2012. Net placements were 1.96 million head. During September, placements of cattle and calves weighing less than 600 pounds were 475,000, 600-699 pounds were 335,000, 700-799 pounds were 480,000, and 800 pounds and greater were 735,000.

Marketings of fed cattle during September totaled 1.70 million, 6 percent above 2012.

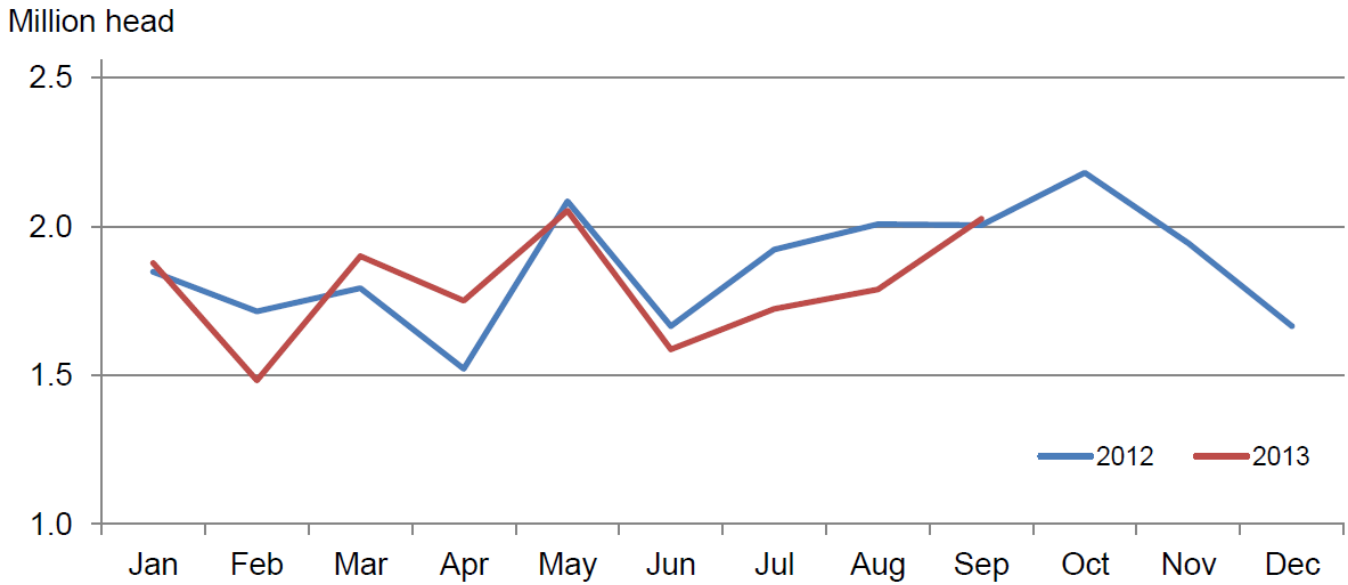
Other disappearance totaled 62,000 during September, 3 percent below 2012.

Cattle on Feed Inventory on 1,000+ Capacity Feedlots – United States

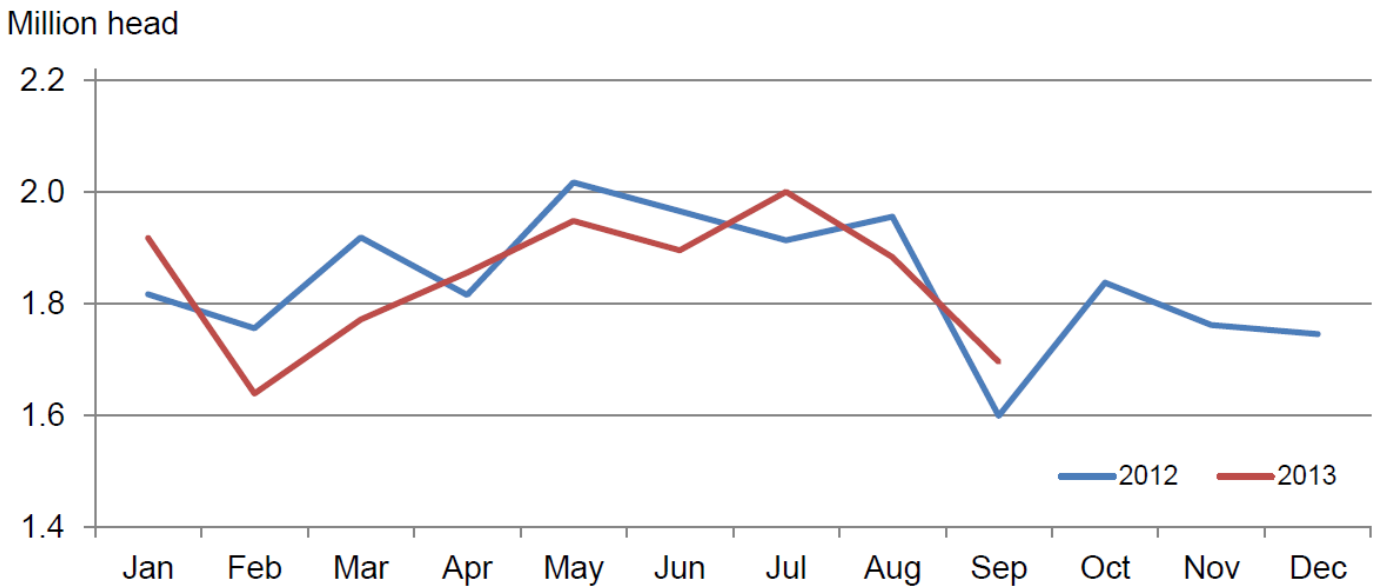
Million head



Number of Cattle Placed on 1000+ Capacity Feedlots – United States



Number of Cattle Marketed on 1,000+ Capacity Feedlots – United States



**2013 Actual Slaughter under Federal Inspection
National Weekly Cattle and Beef Summary
([Available Here](#))
As of August 23, 2013**

**Note: We are still awaiting FIS updates for weeks in September and October
after US Government Shutdown**

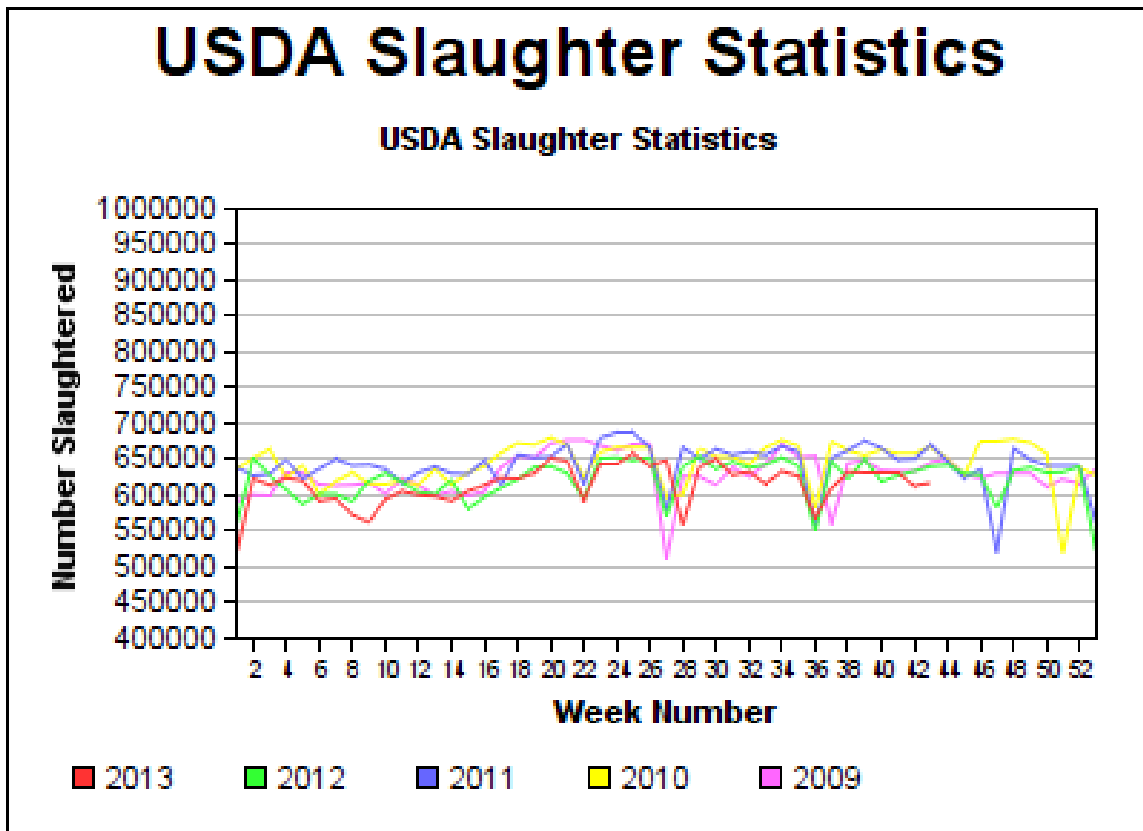
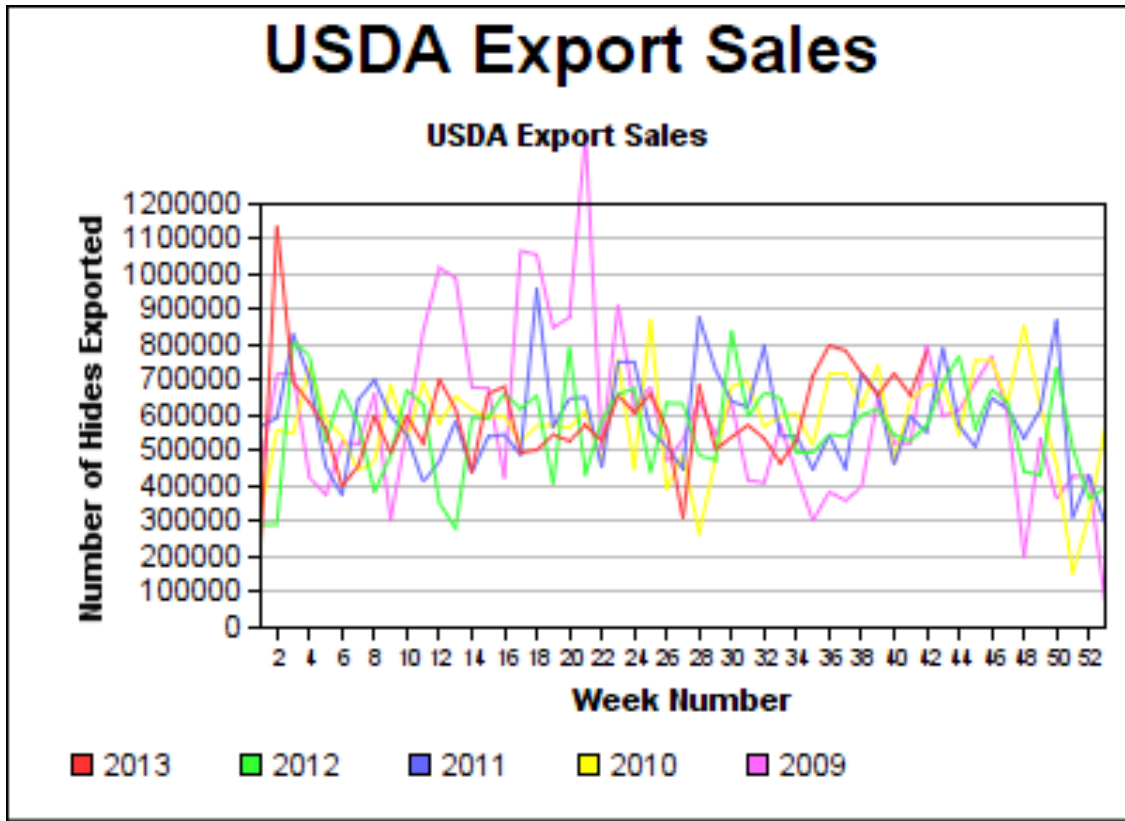
	Total Cattle (Thou. Hd)	Beef Production (Mil Lbs)	Av. Live Weight (Lbs)	Av. Dressed Weight (Lbs)
2012 Total	32,425	25,572.6	1,305	790
YTD 2012	21,186	16,628.7	1,296	786
YTD 2013	20,941	16,572.2	1,311	793
YTD Chg %	-1.2%	-0.3%	1.1%	0.9%

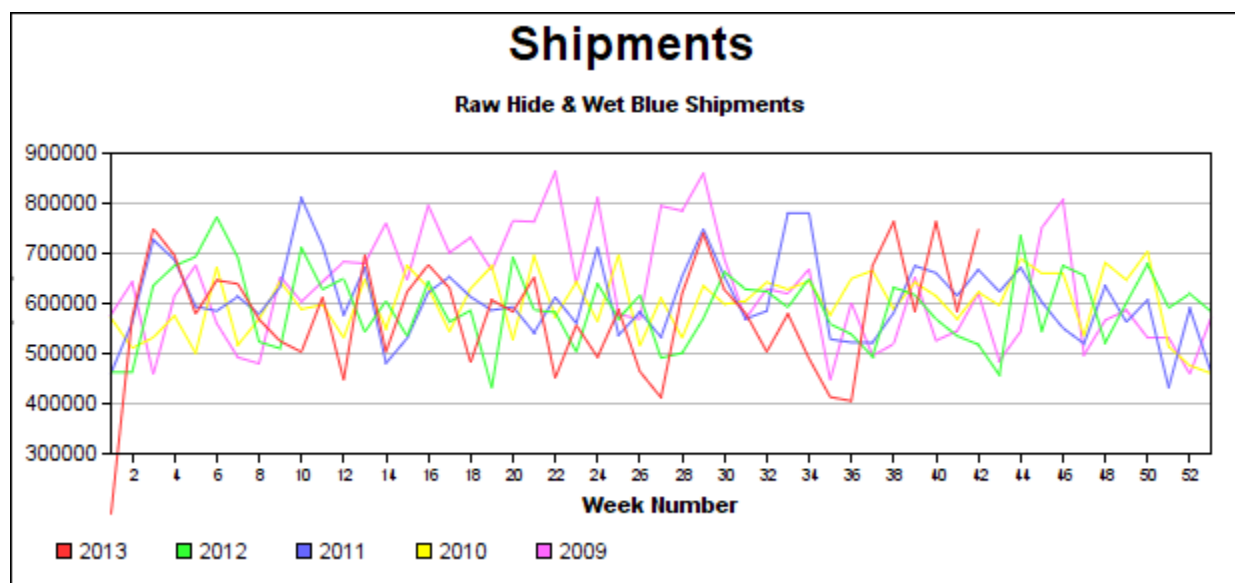
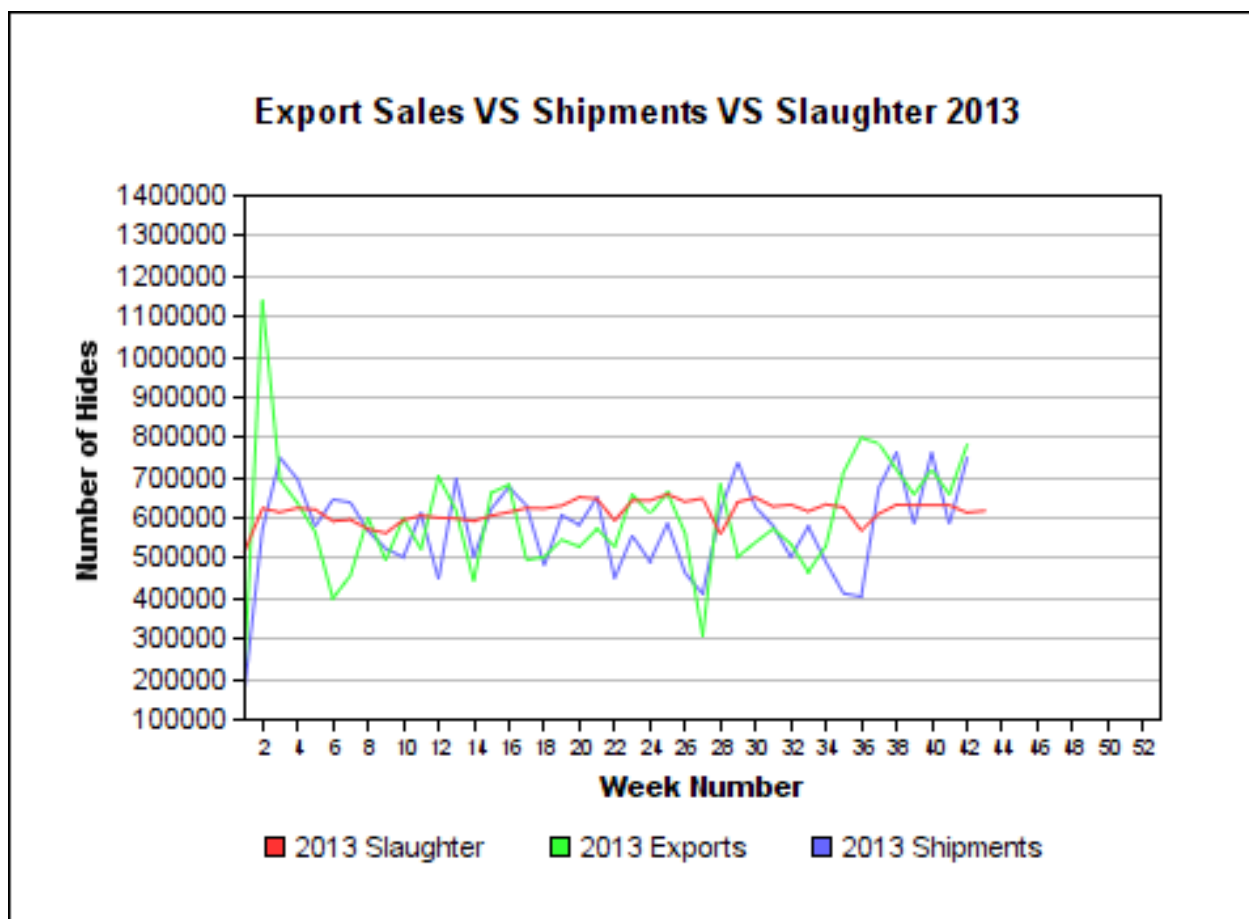
**Weekly Estimated Slaughter Statistics
Weekly Livestock, Meat and Grain Highlights
([Available Here](#))
As of October 28, 2013**

	This Week	Change from Last Week	Change from Year Ago
Hogs			
Weekly Est. Hog Slaughter	2,262,000	-1.5%	-4.5%
YTD. Est. Hog Slaughter	90,277,000		-1.4%
Cattle			
Weekly Est. Cattle Slaughter	618,000	0.2%	-4.3%
YTD Est. Cattle Slaughter	26,430,000		-1.5%

**** Note: Weekly Slaughter Statistics are compiled from two separate USDA sources, with different time periods for measurement and different slaughter estimations. Thus, there is a small difference between the slaughter numbers reported****

Charts Courtesy of Hidenet:





USDA Weekly Export Sales Statistics For the Week Ending October 24, 2013 ([Available Here](#))

Hides and Skins: Net sales of 1,311,300 pieces for 2013 were reported. Whole cattle hide sales of 1,308,200 pieces were primarily for China (886,800 pieces, including 6,700 pieces switched from South Korea and decreases of 66,000 pieces), South Korea (281,600 pieces), Mexico (69,300 pieces), Thailand (24,400 pieces), and Italy (19,700 pieces). Exports of 1,265,900 pieces were reported. Whole cattle exports of 1,254,600 pieces were primarily to China (866,600 pieces), South Korea (203,200 pieces), Mexico (55,300 pieces), Taiwan (45,300 pieces), and Japan (22,600 pieces).

Net sales of 528,800 wet blues for 2013 were primarily for China (124,300 unsplit and 11,400 grain splits), Italy (110,700 unsplit and 9,600 grain splits), Thailand (101,400 unsplit), Mexico (47,300 grain splits and 18,100 unsplit), and South Korea (32,300 unsplit and 4,800 grain splits). Exports of 487,600 hides were primarily to Italy (138,100 unsplit and 8,100 grain splits), China (82,500 unsplit and 15,400 grain splits), Thailand (84,500 unsplit), Mexico (55,900 grain splits and 10,700 unsplit), and Vietnam (32,900 unsplit). Net sales of 5,900 wet blues for 2014 marketing year were reported for South Korea. Net sales of splits totaling 658,300 pounds were for South Korea (293,100 pounds), Vietnam (226,200 pounds), Hong Kong (125,200 pounds), China (13,700 pounds), and Mexico (2,300 pounds). Decreases were reported for Taiwan (2,100 pounds). Exports of 1,778,800 pounds were to South Korea (989,800 pounds), Hong Kong (575,800 pounds), Vietnam (126,800 pounds), Italy (44,000 pounds), Taiwan (41,900 pounds), and Mexico (600 pounds).

WEEKLY NET SALES ACTIVITY COUNTRY	WHOLE				WET BLUES		
	CATTLE HIDES 1601	CALF SKINS 1602	KIP SKINS 1603	CROUPONS 1604	UNSPPLIT 1606	GRAIN SPLIT 1607	DROP SPLITS 1608
	THOUSAND UNITS						
AUSTRIA	2.2						
GERMANY	10.3						
ITALY	19.7		0.3		110.7	9.6	
NETHLDS			2.8				
PORTUGL	0.5						
CROATIA	2.8						
JAPAN	9.6				1.5	17.2	
TAIWAN	5.4				4.2		--2.1
CHINA	886.8				124.3	11.4	13.7
INDIA					4.8		
HG KONG	3.7				6.5		125.2
KOR REP	281.6				32.3	4.8	293.1
THAILND	24.4				101.4		
VIETNAM	--10.1				27.8		226.2
CANADA	1.4						
DOM REP						6.8	
MEXICO	69.3				18.1	47.3	2.3
URUGUAY	0.7						
NET SALES	1,308.2	0.0	3.1	0.0	431.6	97.1	658.3
WEEKLY EXPORTS	1,254.6	0.0	11.3	0.0	389.2	98.4	1,778.8
ACCUM. EXPORTS	18,961.2	39.5	161.9	0.0	3,931.8	1,653.7	24,799.3
OUTSTANDING SALES	3,369.2	13.3	46.9	0.0	737.4	123.2	5,306.3

