



# USHSLA INFO EXCHANGE

## U.S. Statistics

### Export Numbers for U.S. Bovine Fresh/Wet Salted Hides

Number of Pieces/Thousand \$U.S.\*

	Number of Pieces*			Value Thousand \$		
	Jan - Aug 2014	Jan - Aug 2015	% Chg	Jan - Aug 2014	Jan - Aug 2015	% Chng
World	16,392,163	12,824,223	-22%	1,249,154	1,058,291	-15%
China/HK	9,974,157	7,957,814	-20%	799,344	681,162	-15%
Korea	2,365,577	2,187,573	-8%	195,481	192,111	-2%
Mexico	938,676	905,389	-4%	63,770	54,110	-15%
Taiwan	1,131,365	502,803	-56%	84,448	45,242	-46%
EU-28	1,051,090	542,607	-48%	49,371	33,005	-33%
Thailand	182,318	230,781	27%	15,624	19,479	25%
Japan	365,409	106,446	-71%	20,547	11,186	-46%
Vietnam	115,324	120,900	5%	8,287	9,561	15%
Indonesia	27,607	44,935	63%	2,490	3,138	26%
Canada	16,170	46,557	188%	877	2,453	180%
Turkey	109,136	61,767	-43%	5,676	2,058	-64%
India	14,369	33,698	135%	326	905	178%
Pakistan	12,003	23,916	99%	564	830	47%
Cambodia	0	7,732	-	0	793	-
Israel	47,044	23,876	-49%	817	597	-27%
Bosnia	1,320	7,650	480%	128	559	337%
Dom. Rep.	9,075	4,134	-54%	450	446	-1%
Costa Rica	34	11,015	32297%	3	429	14200%
Brazil	900	1,730	92%	36	114	217%
Uruguay	0	946	-	0	28	-
Norway	0	307	-	0	21	-
Australia	170	164	-4%	10	15	50%
Haiti	0	776	-	0	14	-
Philippines	7,000	179	-97%	59	12	-80%
Colombia	18,209	170	-99%	546	12	-98%
Guatemala	0	314	-	0	9	-
Panama	0	44	-	0	4	-

**PLEASE NOTE:** In the past, the Number of Pieces column was inaccurate, typically over-inflating the actual amounts exported. In 2015, the US Government made changes to its reporting system, which we are hopeful will fix this problem. [CLICK HERE](#) for more information.

## Export Numbers for U.S. Pig Skins

Number of Pieces/Thousand \$U.S.

	Number of Pieces			Value Thousand \$		
	Jan - Aug 2014	Jan - Aug 2015	% Chg	Jan - Aug 2014	Jan - Aug 2015	% Chng
<b>World Total</b>	4,616,086	4,008,844	-13%	38,756	27,080	-30%
<b>Mexico</b>	1,779,049	1,587,471	-11%	19,156	13,594	-29%
<b>Taiwan</b>	2,068,016	2,124,160	3%	11,943	10,641	-11%
<b>Thailand</b>	349,138	174,779	-50%	3,563	1,494	-58%
<b>EU-28</b>	110,353	62,050	-44%	960	604	-37%
<b>China/HK</b>	55,328	25,838	-53%	553	304	-45%
<b>Korea</b>	175,260	17,544	-90%	1,753	176	-90%
<b>Vietnam</b>	71,699	9,421	-87%	701	148	-79%
<b>Cambodia</b>	0	5,718	-	0	90	-
<b>Japan</b>	5,839	1,863	-68%	111	29	-74%

## Export Numbers for U.S. Wet Blue Hides

Number of Pieces/Thousand \$U.S.\*\*

	Number of Pieces*			Value Thousand \$		
	Jan - Aug 2014	Jan - Aug 2015	% Chg	Jan - Aug 2014	Jan - Aug 2015	% Chng
<b>World Total</b>	6,799,012	5,218,651	-23%	618,003	544,574	-12%
<b>China/HK</b>	2,526,497	1,848,967	-27%	231,362	188,135	-19%
<b>EU-28</b>	1,534,220	1,236,680	-19%	146,276	131,677	-10%
<b>Vietnam</b>	885,646	636,987	-28%	76,730	68,890	-10%
<b>Taiwan</b>	360,281	355,062	-1%	32,220	38,070	18%
<b>Mexico</b>	466,212	395,228	-15%	31,800	35,563	12%
<b>Korea</b>	202,858	253,200	25%	19,909	26,402	33%
<b>Thailand</b>	354,452	219,014	-38%	32,176	25,116	-22%
<b>Dom. Rep.</b>	256,755	188,058	-27%	26,901	21,691	-19%
<b>Japan</b>	64,777	44,064	-32%	6,143	4,873	-21%
<b>India</b>	57,248	40,252	-30%	5,566	4,047	-27%
<b>Uruguay</b>	89,421	675	-99%	8,845	57	-99%
<b>Argentina</b>	0	439	-	0	51	-
<b>Australia</b>	0	25	-	0	3	-

**PLEASE NOTE:** In the past, the Number of Pieces column was inaccurate, typically over-inflating the actual amounts exported. In 2015, the US Government made changes to its reporting system, which we are hopeful will fix this problem. [CLICK HERE](#) for more information.

## Cattle on Feed Summary

**National Agricultural Statistics Service, USDA**

**[\(Available Here\)](#)**

**Released September 18, 2015**

### United States Cattle on Feed Up 3 Percent

Cattle and calves on feed for the slaughter market in the United States for feedlots with capacity of 1,000 or more head totaled 9.99 million head on September 1, 2015. The inventory was 3 percent above September 1, 2014.

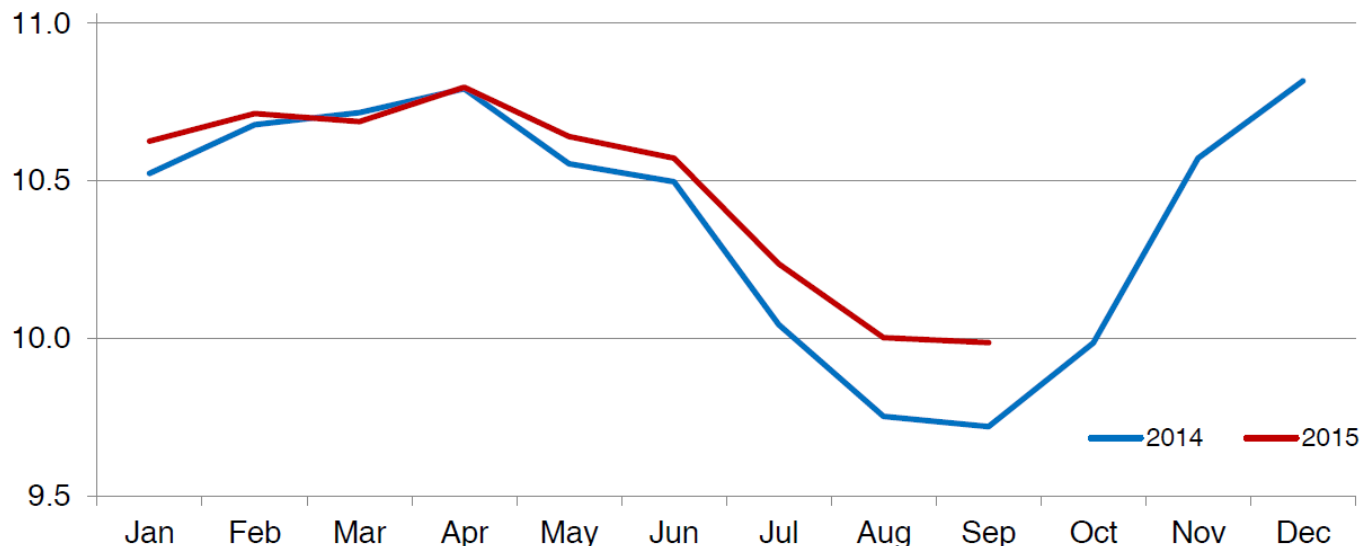
Placements in feedlots during August totaled 1.63 million head, 5 percent below 2014. Net placements were 1.57 million head. During August, placements of cattle and calves weighing less than 600 pounds were 395,000 head, 600-699 pounds were 215,000 head, 700-799 pounds were 362,000 head, and 800 pounds and greater were 660,000 head. Placements are the lowest for August since the series began in 1996.

Marketings of fed cattle during August totaled 1.59 million head, 6 percent below 2014. Marketings are the lowest for August since the series began in 1996.

Other disappearance totaled 60,000 head during August, 9 percent below 2014.

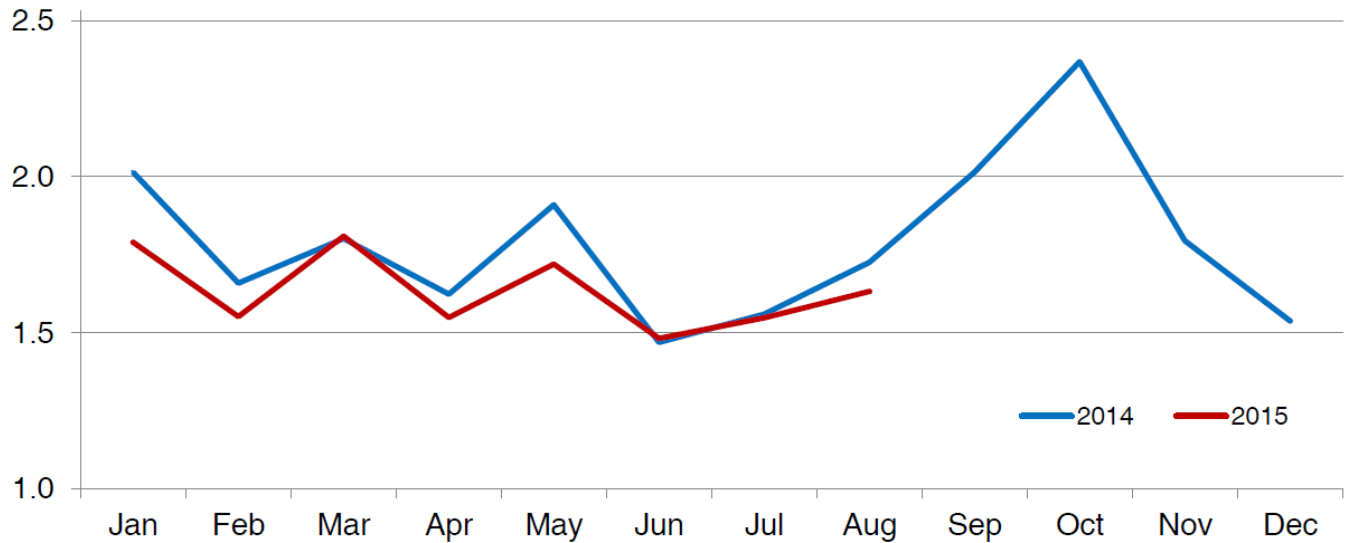
### Cattle on Feed Inventory on 1,000+ Capacity Feedlots – United States

Million head



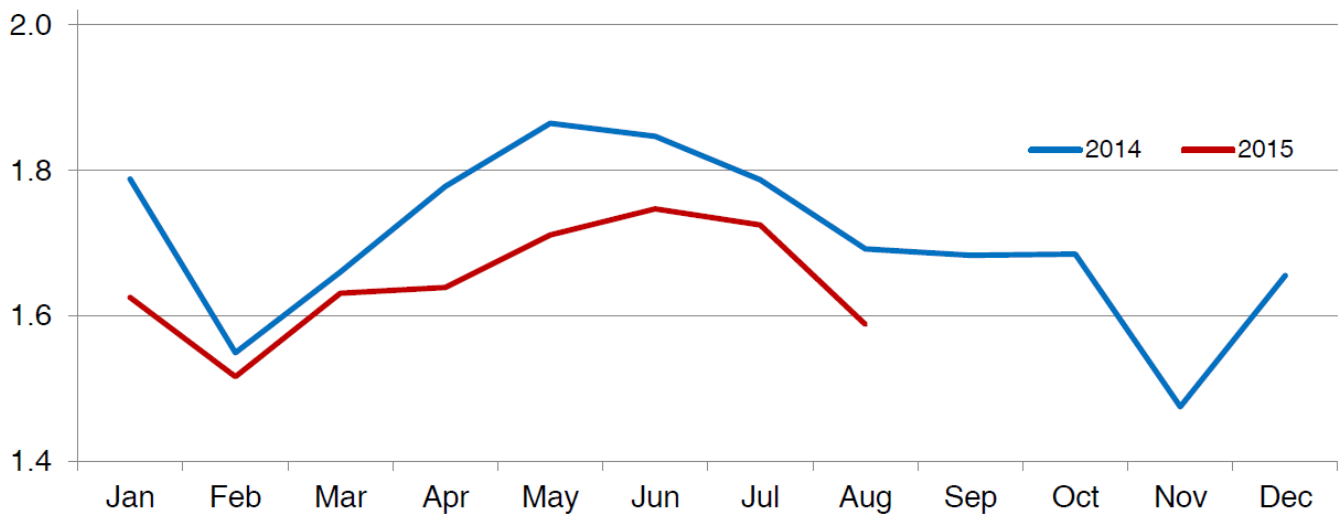
### Number of Cattle Placed on 1,000+ Capacity Feedlots – United States

Million head



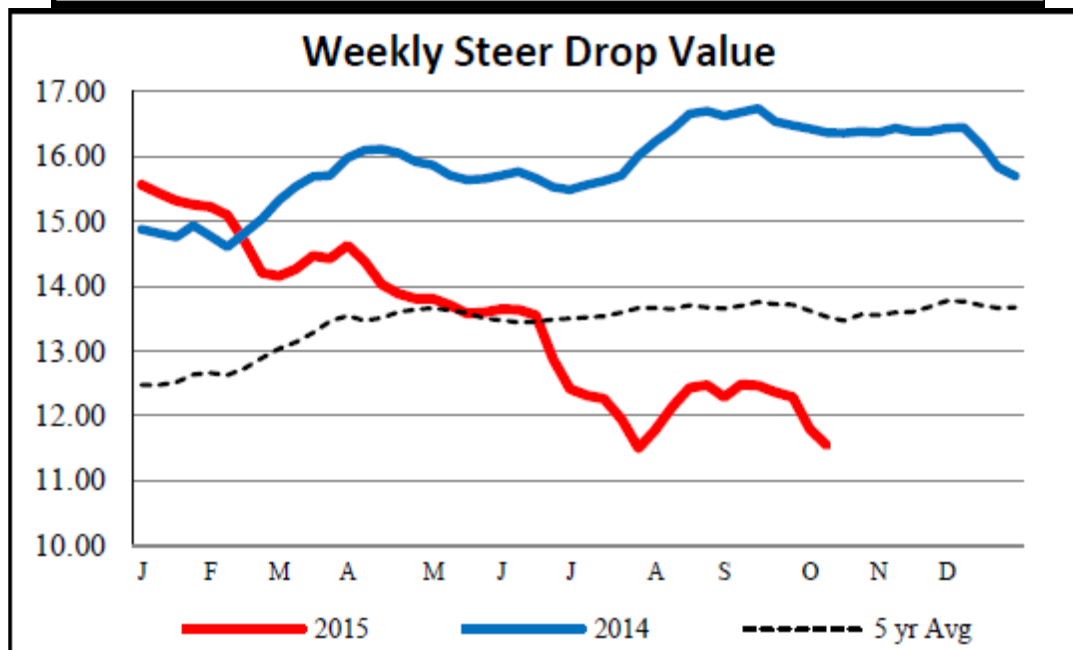
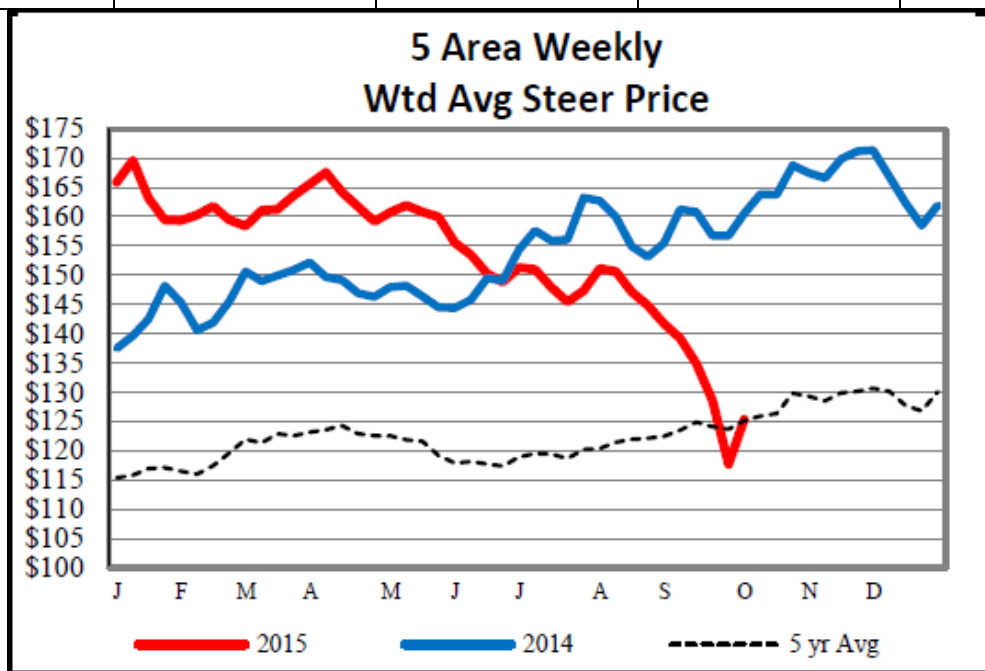
### Number of Cattle Marketed on 1,000+ Capacity Feedlots – United States

Million head



## 2015 Actual Slaughter Under Federal Inspection ([Available Here](#))

	Total Cattle (Thou. Hd)	Beef Production (Mil Lbs)	Av. Live Weight (Lbs)	Av. Dressed Weight (Lbs)
Jan 1 – Oct 9, 2015	22,182	18,191	1,353	822
% changed from 2014	-6.0%	-3.7%	2.1%	2.3%



**Weekly Estimated Slaughter Statistics**  
**Weekly Livestock, Meat and Grain Highlights**  
[\(Available Here\)](#)  
**As of October 13, 2015**

	<b>This Week</b>	<b>Change from Last Week</b>	<b>Change from Year Ago</b>
<b>Hogs</b>			
Weekly Est. Hog Slaughter	2,290,000	0.9%	6.8%
YTD. Est. Hog Slaughter	87,732,000		8.2%
<b>Cattle</b>			
Weekly Est. Cattle Slaughter	557,000	-2.5%	-1.2%
YTD Est. Cattle Slaughter	21,947,000		-6.2%

## USDA Weekly Export Sales Statistics For the Week Ending October 1, 2015 ([Available Here](#))

Hides and Skins: Net sales of 391,200 pieces for 2015, all whole cattle hides, were down 3 percent from the previous week, but up 19 percent from the prior 4-week average. The primary destinations were China (288,200 pieces), Taiwan (37,500 pieces), Mexico (23,700 pieces), and South Korea (17,600 pieces). Decreases were reported for Thailand (400 pieces). Exports of 372,300 pieces were unchanged from the previous week, but down 3 percent from the prior 4-week average. Whole cattle hide exports of 364,400 pieces were primarily to China (193,200 pieces), South Korea (86,400 pieces), Mexico (33,900 pieces), Taiwan (12,200 pieces), and Vietnam (11,600 pieces). Net sales reductions of 298,000 wet blues for 2015 were down noticeably from the previous week and from the prior 4-week average. Increases reported for Italy (30,900 unsplit), Vietnam (6,000 grain splits and 5,300 unsplit), China (9,900 unsplit), and Thailand (6,000 grain splits), were more than offset by decreases for China (292,900 grain splits), Taiwan (21,500 unsplit), India (6,800 grain splits and 6,000 unsplit), and South Korea (5,400 grain splits and 3,700 unsplit). For 2016, net sales of 394,800 wet blues were for China (297,200 grain splits and 17,400 unsplit), Taiwan (30,400 unsplit), India (6,800 grain splits and 6,000 unsplit), and South Korea (5,400 grain splits and 3,300 unsplit). Exports of 115,000 wet blues were down 21 percent from the previous week and 7 percent from the prior 4-week average. The primary destinations were China (18,900 grain splits and 18,800 unsplit), Mexico (14,500 grain splits and 6,900 unsplit), Vietnam (18,100 unsplit and 3,000 grain splits), and Italy (17,400 unsplit and 3,500 grain splits). Net sales reductions of splits totaling 2,404,200 pounds for 2015 resulted as increases for China (593,200 pounds) and South Korea (19,900 pounds), were more than offset by decreases for Vietnam (2,986,100 pounds) and Taiwan (31,200 pounds). For 2016, net sales of 2,675,100 pounds, resulted as increases for Vietnam (2,765,300 pounds) and Italy (5,800 pounds), were partially offset by decreases for China (64,300 pounds) and Taiwan (31,700 pounds). Exports of 356,900 pounds were down 79 percent from the previous week and 43 percent from the prior 4-week average. The destinations were Vietnam (247,900 pounds), Taiwan (100,000 pounds), and South Korea (9,000 pounds).

WEEKLY NET SALES ACTIVITY	WHOLE				WET BLUES		
	CATTLE HIDES 1601	CALF SKINS 1602	KIP SKINS 1603	CROUPONS 1604	UNSPLIT 1606	GRAIN SPLIT 1607	DROP SPLITS 1608
COUNTRY	THOUSAND UNITS						
ITALY	5.3				30.9		
NETHLDS							
TURKEY	1.6						
JAPAN	6.4				-1.2		
TAIWAN	37.5				-21.5		-31.2
CHINA	288.2				9.9	-292.9	593.2
INDIA					-6.0	-6.8	
HG KONG	11.2						
KOR REP	17.6				-3.7	-5.4	19.9
THAILND	-0.4				-5.8	6.0	
VIETNAM	0.1				5.3	6.0	-2,986.1
ARGENT						-6.0	
DOM REP					-4.0		
MEXICO	23.7				-3.9	1.3	
NET SALES	391.2	0.0	0.0	0.0	-0.1	-297.9	-2,404.2
WEEKLY EXPORTS	364.4	0.0	7.9	0.0	75.1	39.9	356.9
ACCUM. EXPORTS	15,022.3	14.3	155.6	0.0	3,760.6	1,479.0	28,136.9
OUTSTANDING SALES	3,207.2	6.5	39.2	0.0	374.2	255.2	6,814.0