



USHSLA INFO EXCHANGE

1150 Connecticut Ave NW, 12th Floor, Washington, DC 20036
www.ushsla.org (202) 587-4250

Trade Statistics

Export Numbers for U.S. Bovine Fresh/Wet Salted Hides Number of Pieces/Thousand \$U.S.*

	Number of Pieces			Value Thousand \$		
	Jan. - Mar 2013	Jan. - Mar 2014	% Chg	Jan. - Mar 2013	Jan. - Mar 2014	% Chng
World	8,692,055	9,550,745	10%	446,881	472,478	6%
China/HK	5,274,087	5,845,003	11%	281,181	304,007	8%
Korea	1,564,896	1,366,943	-13%	85,339	70,498	-17%
Taiwan	582,560	764,633	31%	29,382	35,847	22%
EU-28	328,002	633,526	93%	10,887	21,594	98%
Mexico	329,297	359,010	9%	15,889	17,142	8%
Japan	191,491	303,652	59%	6,738	10,730	59%
Thailand	104,279	92,197	-12%	5,091	4,974	-2%
Vietnam	179,816	82,010	-54%	8,773	3,961	-55%
Turkey	53,324	50,465	-5%	753	2,241	198%
Israel	30,070	20,313	-32%	436	364	-17%
Canada	23,709	6,193	-74%	1,409	311	-78%
Dom. Rep.	612	6,681	992%	54	301	457%
Pakistan	7,000	3,895	-44%	124	207	67%
Colombia	0	6,028	-	0	181	-
Philippines	0	7,000	-	0	59	-
India	0	2,627	-	0	29	-
Bahamas	0	365	-	0	18	-
Australia	0	170	-	0	10	-
Costa Rica	32	34	6%	3	3	0%

****Source: USDA Foreign Agricultural Service GATS, U.S. Census Bureau. PLEASE NOTE: U.S. Census Bureau estimates the quantity of hides and skins exported based on the declared VALUE of a shipment. Therefore, the above QUANTITIES or NUMBER OF PIECES are over-inflated due to very high export values. U.S. Census is investigating these discrepancies.**

Export Numbers for U.S. Pig Skins

Number of Pieces/Thousand \$U.S.

	Number of Pieces			Value Thousand \$		
	Jan. - Mar 2013	Jan. - Mar 2014	% Chg	Jan. - Mar 2013	Jan. - Mar 2014	% Chng
World Total	1,194,730	1,510,491	26%	13,612	13,953	3%
Mexico	586,668	613,051	4%	6,885	6,652	-3%
Taiwan	295,338	588,720	99%	3,680	4,241	15%
Thailand	77,400	169,700	119%	714	1,677	135%
Vietnam	168,600	105,899	-37%	1,654	1,029	-38%
EU-28	46,835	31,500	-33%	552	306	-45%
Japan	13,914	1,621	-88%	92	49	-47%

Export Numbers for U.S. Wet Blue Hides

Number of Pieces/Thousand \$U.S.**

	Number of Pieces			Value Thousand \$		
	Jan. - Mar 2013	Jan. - Mar 2014	% Chg	Jan. - Mar 2013	Jan. - Mar 2014	% Chng
World Total	3,426,460	3,977,983	16%	190,690	224,126	18%
China/HK	1,412,973	1,491,291	6%	82,453	85,750	4%
EU-28	606,747	825,763	36%	34,345	49,880	45%
Vietnam	329,286	598,121	82%	19,177	35,337	84%
Thailand	28,009	209,501	648%	1,602	12,830	701%
Taiwan	163,850	223,289	36%	10,283	11,979	16%
Mexico	473,724	333,590	-30%	14,275	11,825	-17%
Dom. Rep.	129,926	107,030	-18%	8,030	5,878	-27%
Korea	212,934	94,656	-56%	16,365	5,284	-68%
Uruguay	18,860	40,333	114%	1,838	2,307	26%
India	32,298	27,212	-16%	1,683	1,657	-2%
Japan	5,031	27,197	441%	259	1,397	439%

***Source: USDA Foreign Agricultural Service GATS; U.S. Census Bureau. Please note, wet blue numbers include cattle/equine full grains, top grains and drop splits combined, and also employ estimates.**

Cattle on Feed Summary

National Agricultural Statistics Service, USDA

(Available Here)

Released May 16, 2014

United States Cattle on Feed Down 1 Percent

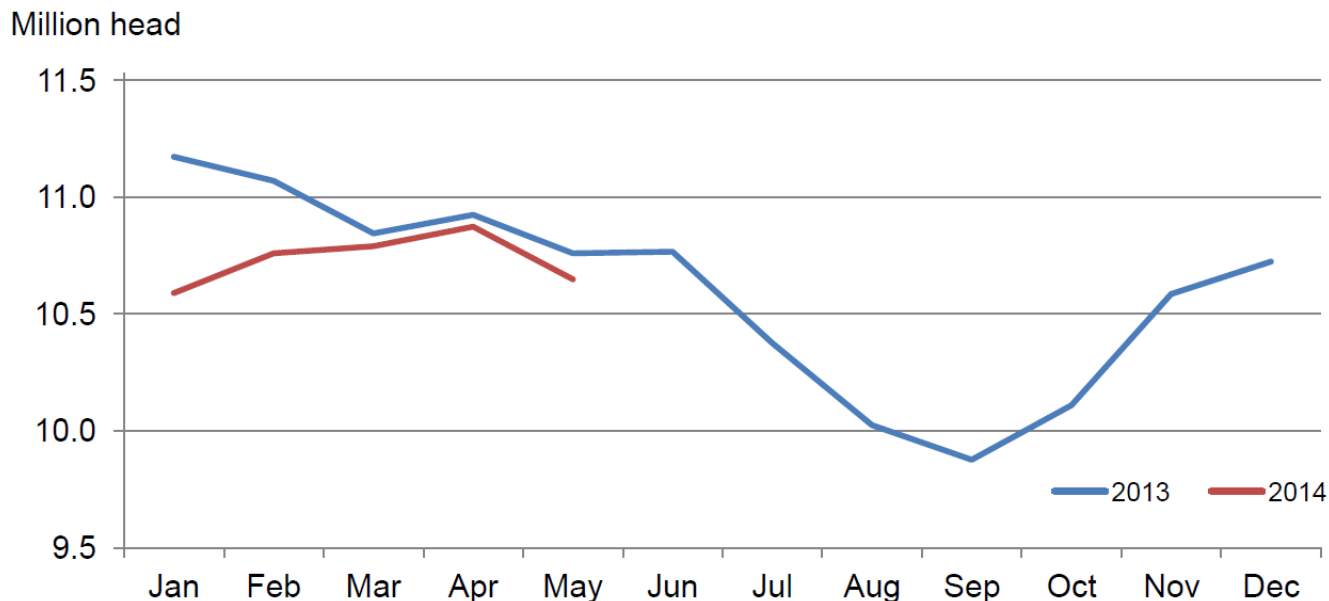
Cattle and calves on feed for slaughter market in the United States for feedlots with capacity of 1,000 or more head totaled 10.6 million head on May 1, 2014. The inventory was 1 percent below May 1, 2013.

Placements in feedlots during April totaled 1.64 million, 5 percent below 2013. Net placements were 1.55 million head. During April, placements of cattle and calves weighing less than 600 pounds were 385,000, 600-699 pounds were 255,000, 700-799 pounds were 396,000, and 800 pounds and greater were 600,000.

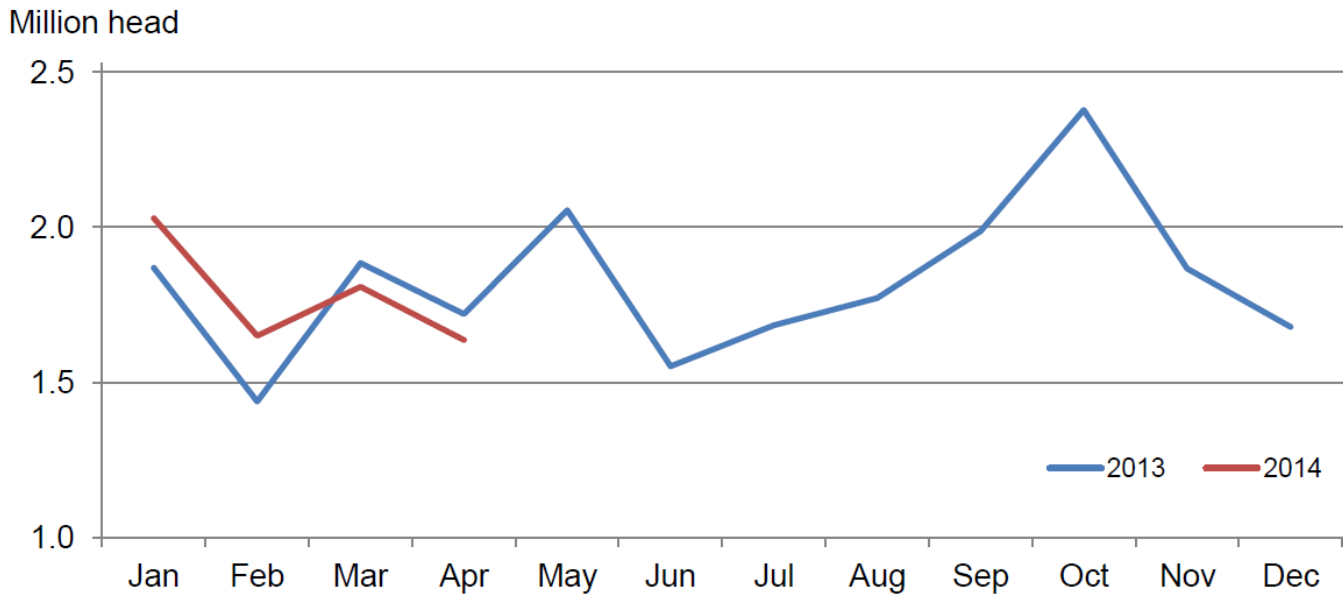
Marketings of fed cattle during April totaled 1.78 million, 2 percent below 2013. Marketings for April are the lowest for the month since the series began in 1996.

Other disappearance totaled 83,000 during April, 20 percent above 2013.

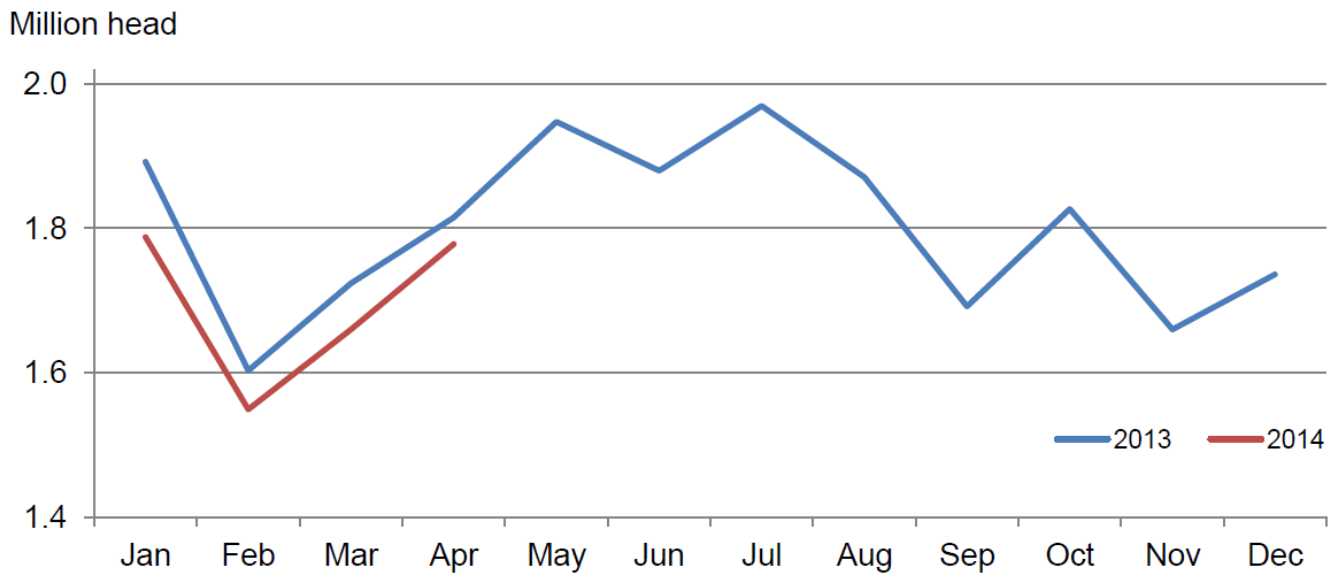
Cattle on Feed Inventory on 1,000+ Capacity Feedlots – United States



Number of Cattle Placed on 1,000+ Capacity Feedlots – United States

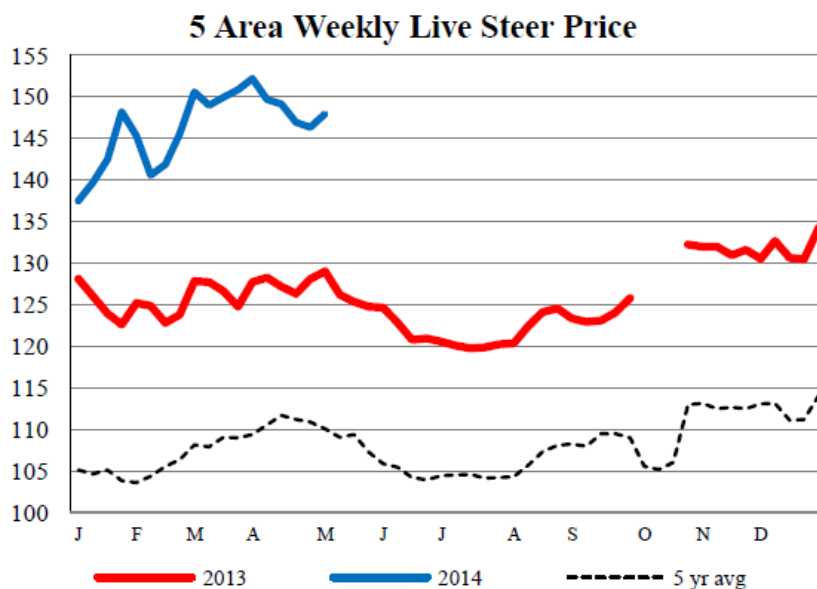


Number of Cattle Marketed on 1,000+ Capacity Feedlots – United States



2014 Actual Slaughter Under Federal Inspection ([Available Here](#))

	Total Cattle (Thou. Hd)	Beef Production (Mil Lbs)	Av. Live Weight (Lbs)	Av. Dressed Weight (Lbs)
Jan 1 – May 9, 2014	10,843	8,648	1,329	799
% changed from 2013	-5.1%	-4.3%	1.1%	0.8%



Weekly Estimated Slaughter Statistics Weekly Livestock, Meat and Grain Highlights ([Available Here](#)) As of May 19, 2014

	This Week	Change from Last Week	Change from Year Ago
Hogs			
Weekly Est. Hog Slaughter	1,999,000	-0.5%	-1.9%
YTD. Est. Hog Slaughter	40,605,000		-3.9%
Cattle			
Weekly Est. Cattle Slaughter	591,000	-1.5%	-9.6%
YTD Est. Cattle Slaughter	11,250,000		-6.2%

USDA Weekly Export Sales Statistics For the Week Ending May 8, 2014 ([Available Here](#))

Hides and Skins: Net sales of 507,500 pieces, all whole cattle hides, reported for 2014 were up 65 percent from the previous week and 31 percent from the prior 4-week average. The primary destinations were China (341,800 pieces), South Korea (67,200 pieces), Mexico (60,600 pieces), Taiwan (17,700 pieces), and Hong Kong (8,400 pieces). Exports of 486,800 pieces were up 18 percent from the previous week and 5 percent from the prior 4-week average. Whole cattle hides exports totaled 485,400 pieces, with the primary destinations being China (333,400 pieces), South Korea (88,000 pieces), Taiwan (27,400 pieces), Mexico (16,500 pieces), and Japan (6,000 pieces).

Net sales of 78,000 wet blues for 2014 were reported for Italy (19,500 grain splits and 19,000 unsplit), Mexico (17,400 grain splits and 8,300 unsplit), the Dominican Republic (5,200 grain splits and 2,400 unsplit), and China (3,200 unsplit and 2,000 grain splits). Decreases were reported for South Korea (5,400 grain splits). Exports of 166,700 wet blues were primarily to China (33,200 unsplit and 4,100 grain splits), Italy (35,000 unsplit), Mexico (23,600 grain splits and 2,900 unsplit), Vietnam (26,200 unsplit and 1,300 grain splits), and South Korea (15,900 grain splits and 1,200 unsplit). Net sales reductions of splits totaling 417,800 pounds for 2014 resulted as increases for Vietnam (1,000 pounds), were more than offset by decreases for South Korea (357,100 pounds), Hong Kong (59,100 pounds), and China (2,700 pounds). Exports of 637,500 pounds were reported to South Korea (259,200 pounds), Vietnam (163,400 pounds), Hong Kong (125,300 pounds), China (85,300 pounds), and India (4,300 pounds).

WEEKLY NET SALES ACTIVITY COUNTRY	WHOLE				WET BLUES		
	CATTLE HIDES 1601	CALF SKINS 1602	KIP SKINS 1603	CROUPONS 1604	UNSPPLIT 1606	GRAIN SPLIT 1607	DROP SPLITS 1608
THOUSAND UNITS							
GERMANY	1.3						
ITALY	0.8				19.0	19.5	
JAPAN	1.9				3.1	--0.1	
TAIWAN	17.7						
CHINA	341.8				3.2	2.0	--2.7
INDIA					2.6		
HG KONG	8.4						--59.1
KOR REP	67.2				0.8	--5.4	--357.1
THAILND	7.6						
VIETNAM	0.1						1.0
DOM REP					2.4	5.2	
MEXICO	60.6				8.3	17.4	
NET SALES	507.5	0.0	0.0	0.0	39.3	38.7	--417.8
WEEKLY EXPORTS	485.4	0.0	1.4	0.0	116.3	50.4	637.5
ACCUM. EXPORTS	8,308.7	10.9	76.3	0.0	1,843.9	603.1	9,783.7
OUTSTANDING SALES	2,679.7	5.0	40.8	0.0	621.5	306.9	7,929.8